

# Knowledge Base Article

Product Category: Basic Condition Monitoring Products  
 Product: CMVL 4000 – SKF Wireless MicroVibe, Data Management Software  
 Version: 2.0.0

## Abstract

This article explains why a user would see a 'program terminated irregularly' error [Figure 1] when attempting to install SKF Wireless MicroVibe Data Management Software.

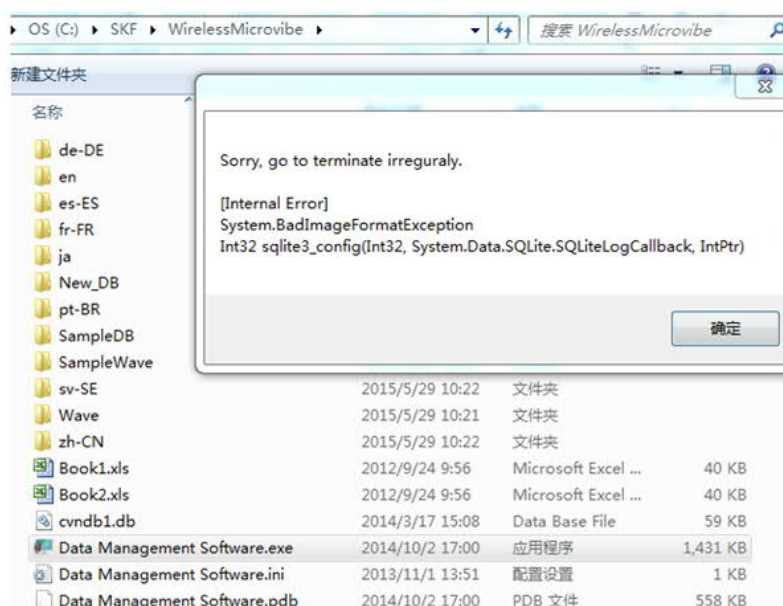


Figure 1. 'Program terminated irregularly' error

## Overview

The error message shown in Figure 1 above occurs when the wrong bit version software is being installed. For example, the error would occur if a user is trying to install the 64-bit version onto a 32-bit PC, or vice versa.

To eliminate the error and properly install the Data Management Software, obtain the correct bit version software and run through the installation as usual.

----

For further assistance, please contact the Technical Support Group by phone at 1-858-496-3627, or by e-mail at [TSG-CMC@skf.com](mailto:TSG-CMC@skf.com).