

# Knowledge Base Article

Product Category: Software  
 Product: CMSW 7600 – SKF @ptitude Observer  
 Version: 10

## Abstract

This knowledgebase article describes the rules for using "Acc Env Custom" envelop filter in SKF @ptitude Observer.

## Overview

The general rules for using "Acc Env Custom" filter in SKF @ptitude Observer are [Figure 1]:

- Custom low frequency cutoff must be 5 Hz or higher
- Custom high frequency cutoff must be at least 10x or higher than low frequency cutoff
- Maximum custom high frequency cutoff is 12500 Hz

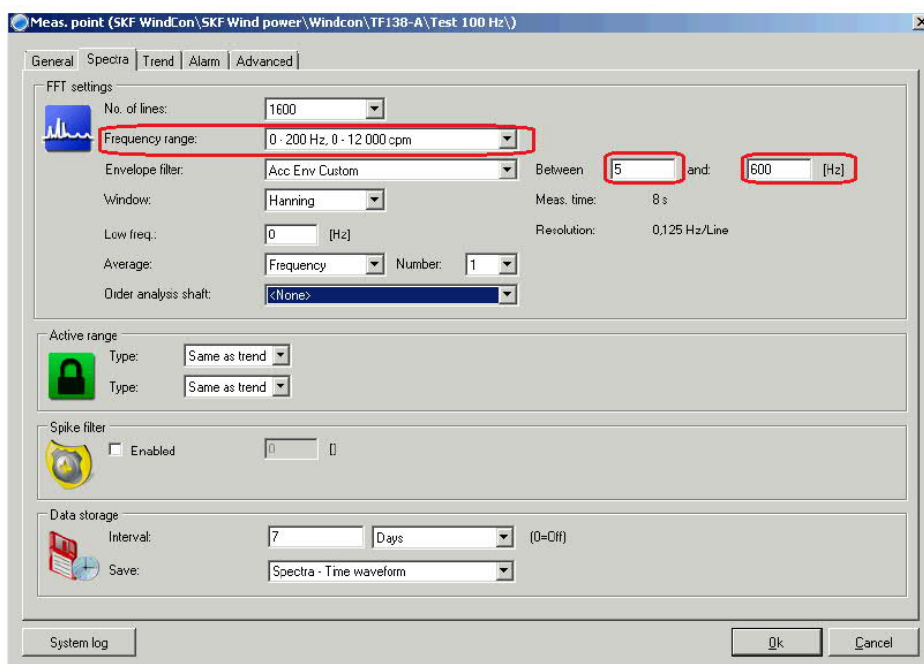


Figure 1. Acc Env Custom frequency configuration

There are also some individual rules for different frequency ranges. Figure 2 provides individual frequency range limits.

Minimum custom low cutoff frequency is 5 Hz  
 Custom high cutoff frequency / low cutoff frequency must be at least 10x  
 Maximum custom high cutoff frequency is 12500 Hz (also shown below)

Below is valid spectra Fmax for standard bands 1-3 and custom bands

	Custom high cutoff >	Custom low cutoff <=	Sampling Fmax	Spectra Fmax											
				40000	20000	10000	5000	2000	1000	500	200	100	50	20	10
Band 4	12500		40000	0	0	0	0	0	0	0	0	0	0	0	0
Band 3 (500-10000)	6250	12500	20000	0.5	1	2	4	10	20	40	100	200	400	1000	2000
	3125	6250	10000	0.25	0.5	1	2	5	10	20	50	100	200	500	1000
	1250	3125	5000	0.125	0.25	0.5	1	2.5	5	10	25	50	100	250	500
Band 2 (50-1000)	625	1250	2000	0.05	0.1	0.2	0.4	1	2	4	10	20	40	100	200
	312.5	625	1000	0.025	0.05	0.1	0.2	0.5	1	2	5	10	20	50	100
	125	312.5	500	0.0125	0.025	0.05	0.1	0.25	0.5	1	2.5	5	10	25	50
Band 1 (5-100)	100	125	200	0.005	0.01	0.02	0.04	0.1	0.2	0.4	1	2	4	10	20

Figure 2. Chart showing individual frequency range limits

### Example

If the frequency range is set to "0 - 200 Hz, 0 - 12 000 cpm" and the custom low frequency cutoff is set to 5 Hz, then the custom high frequency cutoff must be at least 50 Hz (5\*10) up to 125 Hz or from 626 Hz or higher up to maximum 12500 Hz (but not between 126 Hz up to 625 Hz).

----

For further assistance, please contact the Technical Support Group by phone at 1-858-496-3627, or by e-mail at [TSG-CMC@skf.com](mailto:TSG-CMC@skf.com).