

Knowledge Base Article

Product Category: Inspection Systems

Product: CMDM6700 – SKF Microlog Inspector; CMVL8000 – Wireless Machine Condition Detector (WMCD)

Version: All

Abstract

This knowledgebase article provides instructions on how to clear historical SKF Wireless Machine Condition Detector (WMCD) list from an SKF Microlog Inspector handheld device.

Overview

When there are no detectable SKF WMCD devices within range, then the SKF Microlog Inspector will pull from a list of historical WMCD devices. The “Historic WMCD Devices” list [Figure 1] is a list of all WMCD devices that this device has connected to in the past. Therefore, it is not an accurate list of available WMCD devices, as it is only pulling from a historical list.

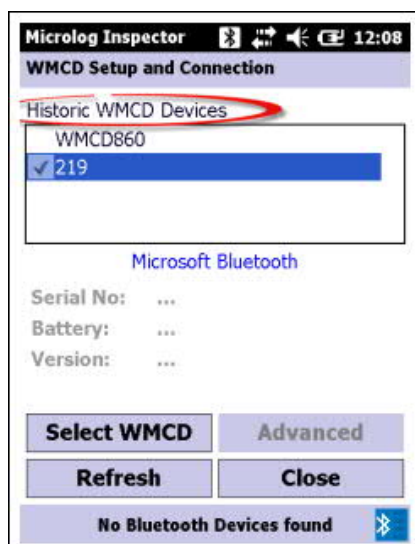


Figure 1. Historic WMCD Devices list

To clear the historical list of WMCD devices, browse the SKF Microlog Inspector device. Go to Program Files\Microlog Inspector\ and delete the BluetoothDevices.xml file, which houses this list.

For further assistance, please contact the Technical Support Group by phone at 1-858-496-3627, or by e-mail at TSG-CMC@skf.com.