

# Knowledge Base Article

Product Group: Software  
Product: CMSW7400 - @ptitude Analyst  
Version: All

## Abstract

Why are Barcode/RFID Location tags not printing out on a report generated in SKF @ptitude Analyst?

## Overview

In SKF @ptitude Analyst, we provide the ability to assign a Barcode/RFID Location tag to either a POINT or a Machine. It is highly unlikely that a user will be assigning a Barcode/RFID Location tag to each individual measurement POINT because of the time and cost involved with so many measurement POINTs. Instead, it would be more common for a user to assign Barcode/RFID Location tags at the Machine level within SKF @ptitude Analyst.

There is a way to capture a Last Measurement Report that will list the Machine Name, POINT Name and Location tag, however, this particular Location tag value ONLY applies to the POINT level Location tag value and NOT the Machine level Location tag value.

Therefore, if a user has Barcode/RFID Location tags assigned to POINTs, the user should choose the Location tag value. However, if a user has Barcode/RFID Location tags assigned to Machines, the user should choose the Machine location tag value. [Figure 1]

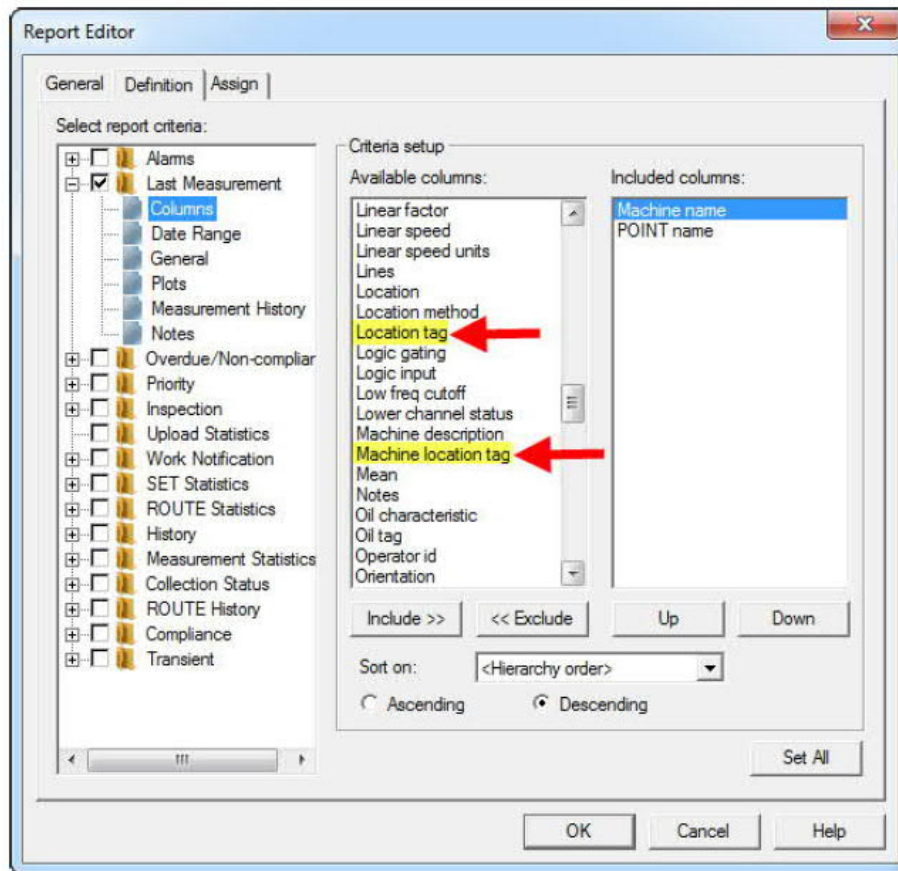


Figure 1. Report Editor criteria

-----  
 For further assistance, please contact the Technical Support Group by phone at 1-858-496-3627, or by e-mail at [TSG-CMC@skf.com](mailto:TSG-CMC@skf.com).