

Knowledge Base Article

Product Group: Software
 Product: CMSW7400 - @ptitude Analyst; CMSW7311 – Analysis and Reporting Manager (stand-alone version)
 Version: 8.0a (@ptitude Analyst); 2.0 (ARM)

Abstract

The SKF Analysis and Reporting Manager (ARM) add-on in SKF @ptitude Analyst 2013 Edition and the stand-alone version of ARM 2.0 (build 2.0.5.0) both allow the user to generate Word documents from their data using the Report Generator for Microsoft Word. [Figure 1]

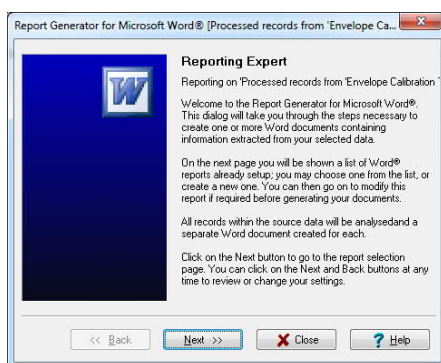


Figure 1. Report Generator

When the user sets up a report, there is a page in the Report Generator for Microsoft Word which allows the user to pick bookmarks from the selected template to be the locations in the document where the report item information is written. [Figure 2]

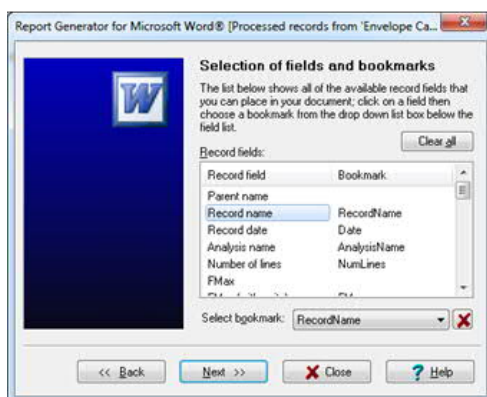


Figure 2. Fields and bookmarks selection

This article discusses the use of numbering in the bookmarks, which is essential when writing out information from multiple records in ARM.

Overview

Reporting items include setup information about the data, such as FMax or number of lines, record name, analysis name and date/time information and graphical plots. For balance reports, there is extended output information available, including generating a balance report table; for Check-to-conformance, the CTC table and machine graphic may be included.

The bookmarks in the Word template used by ARM may include a number at the end of the bookmark name. If no number is specified, ARM will assume that only one of that item is to be written to the document, regardless of how many items there are in the source data.

As an example, consider a record with two spectra, to be output as two individual plots in the document. In the Selection of fields and bookmarks window shown in Figure 1, there is only one opportunity to associate the graph plot with a bookmark, since this page in ARM is dealing with generic set up only. [Figure 3]

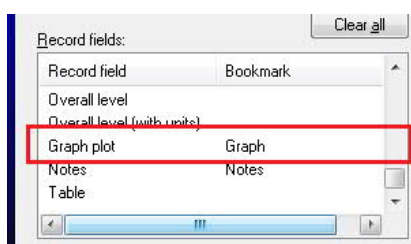


Figure 3. Bookmark association

If the template only had one bookmark called "Graph" and the user associated this with the "Graph plot" report item, then only the first spectrum plot would be added to the document.

In order to include both spectrum plots in the document, it is necessary for the user to include two bookmarks in the template, and these should be named "Graph1" and "Graph2". In the Selection of fields and bookmarks window, the user should choose either bookmark to be associated with "Graph plot."

In this case, when generating the document, ARM detects that numbered bookmarks are in use and expects to find a "Graph1" bookmark against which to write the first graph plot, and a "Graph2" bookmark against which to write the second graph plot.

It follows from this that the user has to enter at least as many numbered bookmarks in the template as there are graph plots he will need to output; if there are too few, ARM will stop creating the document once it runs out, and report an error. If there are too many,

ARM will complete reporting without error, since it does not care about any unused bookmarks.

Note the following:

- The bookmarks may be in any location in the template, as their positions are irrelevant to ARM.
- The user can omit any numbered bookmarks from the sequence. For instance, if three out of four plots were required, and it was the second one that was not required, it would be necessary only to include the "Graph1", "Graph3" and "Graph4" bookmarks in the template. ARM will detect there is no bookmark for the second plot and carry on to the next.
- The template can mix numbered and non-numbered bookmarks. The latter are useful for writing out information that is the same for all records, e.g. measurement date/time.

For further assistance, please contact the Technical Support Group by phone at 1-800-523-7514 option 8, or by e-mail at TSG-CMC@skf.com.