

Knowledge Base Article

Product Group: Software

Product: CMSW7321 - @ptitude Analyst Thin Client Transfer (TCT)

Version: N/A

Abstract

SKF @ptitude Analyst Thin Client Transfer (TCT) will not start. There is an error message stating that the ATL100.DLL file is missing. [Figure 1]

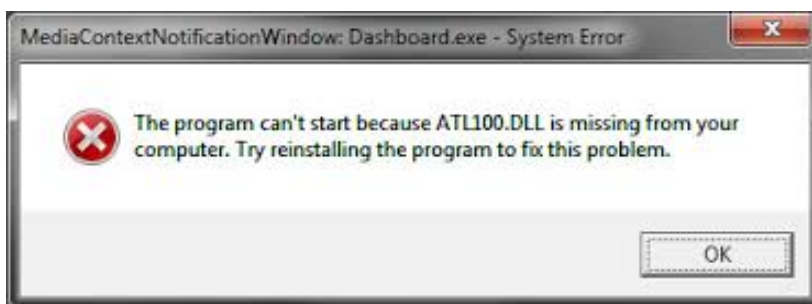


Figure 1. *"The program can't start because ATL100.DLL is missing from your computer. Try reinstalling the program to fix this problem."*

Overview

The ATL100.DLL file is a C++ DLL file and can be installed by downloading the C++ Runtime program from Microsoft, using the following external links provided here:

32-bit version

<http://www.microsoft.com/en-us/download/details.aspx?id=8328>

64-bit version

<http://www.microsoft.com/en-us/download/details.aspx?id=14632>

For further assistance, please contact the Technical Support Group by phone at 1-800-523-7514 option 8, or by e-mail at TSG-CMC@skf.com.