

Knowledge Base Article

Product Group: Software

Product: CMSW7400 - @ptitude Analyst

Version: N/A

Abstract

This article describes the procedure for creating a new Oracle DB connect name using the SKF @ptitude Analyst Configuration Tool.

Overview

The steps outlined below should be used to create a new Oracle DB connect name in the Configuration Tool.

1. Go to **Start > Programs > SKF @ptitude Monitoring Suite > Admin Tools > SKF @ptitude Analyst Configuration Tool**.
2. Select **Database Type**. [Figure 1]

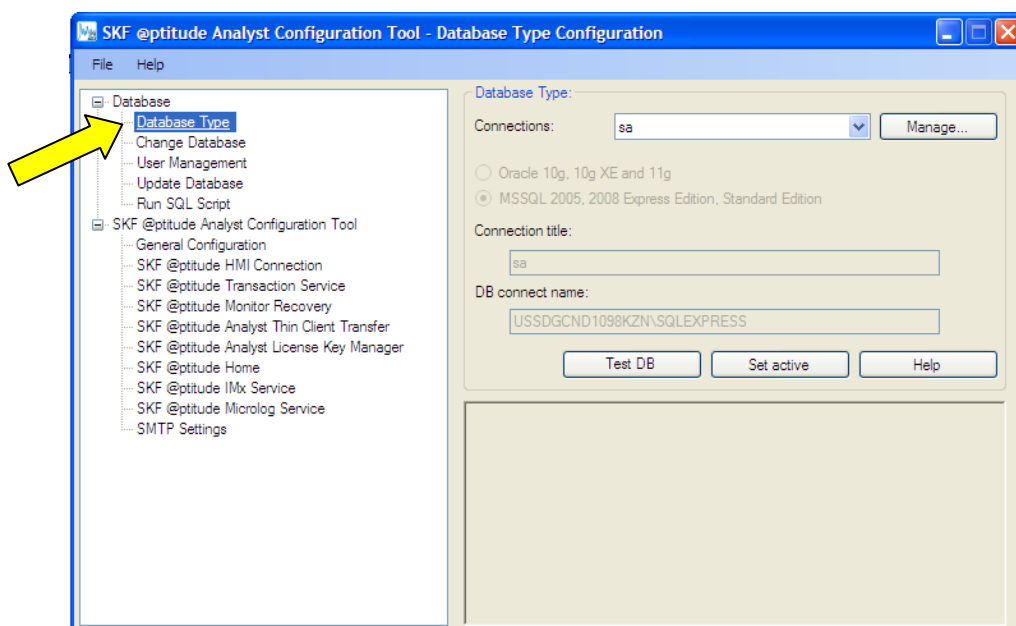


Figure 1. SKF @ptitude Analyst Configuration Tool

3. Click **Manage...** [Figure 2]

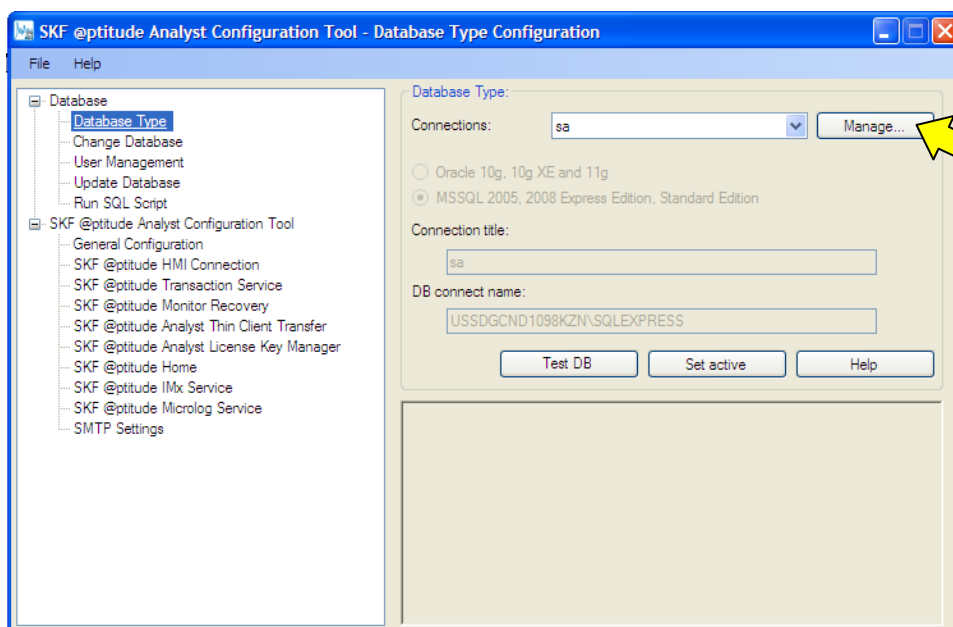


Figure 2. Database Type Configuration

4. Click **Add**. [Figure 3]

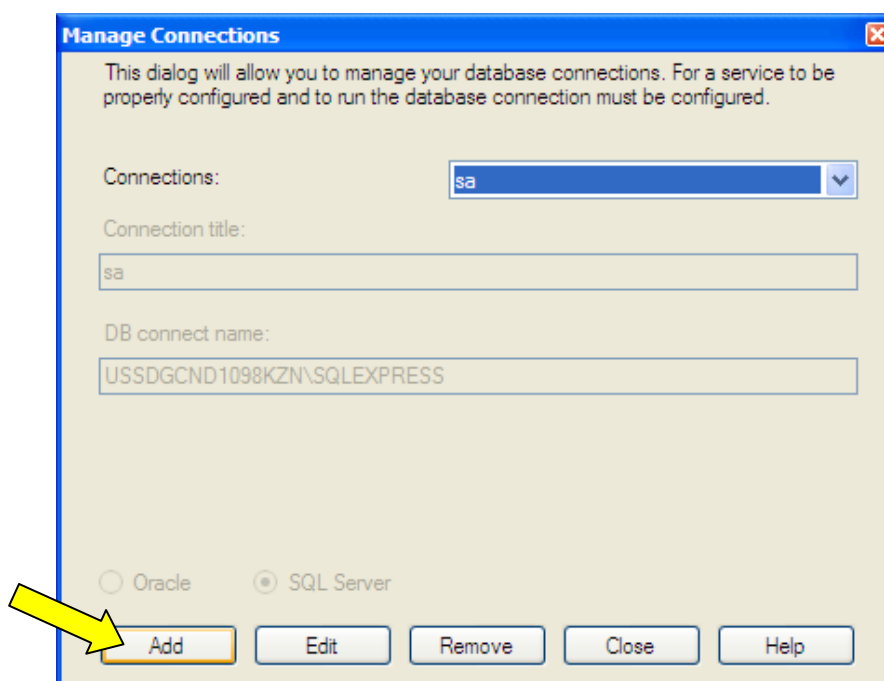


Figure 3. Manage Connections

5. Select the **Oracle** radio button, then enter the **Connection title** and **DB connect name**. [Figure 4]

➤ The **connection title** can be called anything the user desires.

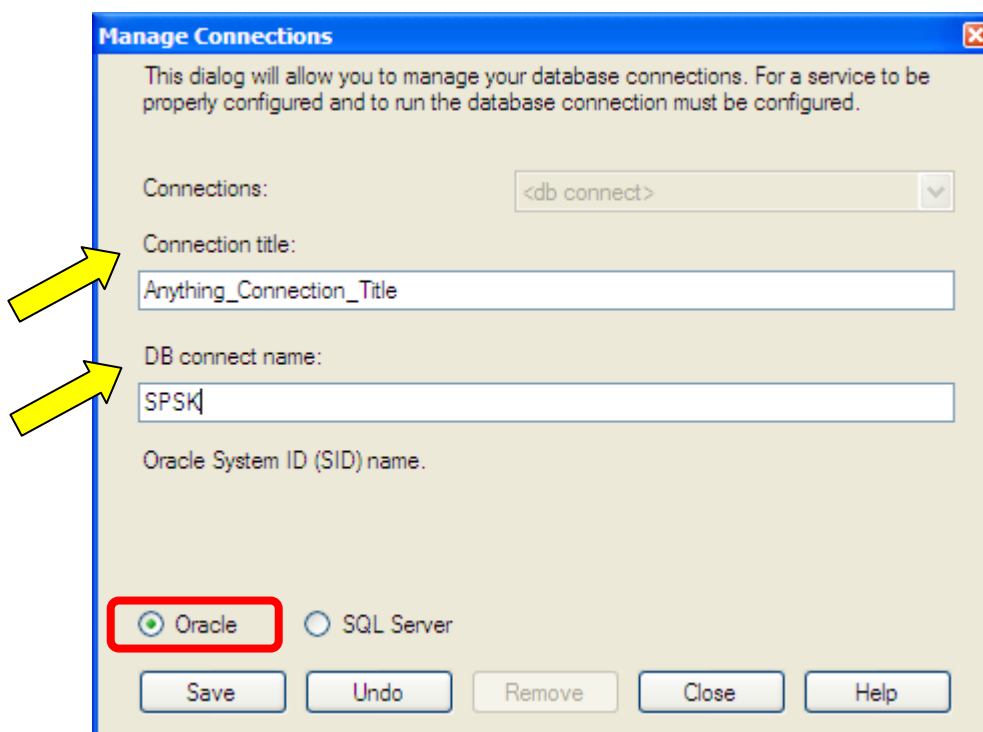


Figure 4. Adding a new Oracle connection

6. Click **Save**. A window will display auto populated with database login information. Click **OK**.
 - If the connection is successful, the user will be able to get back out to the Database Type configuration window [Figure 5] after pressing **OK**.

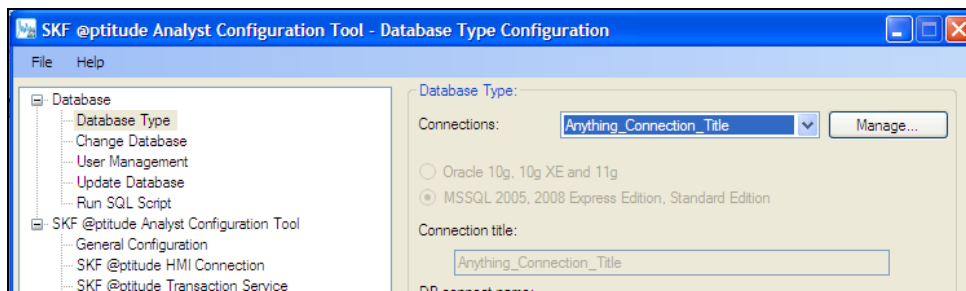


Figure 5. Database Type Configuration

7. Now, from the **Connections** drop-down list, choose the newly created connection.
8. Press **Test DB**, and then press **Set Active**.
9. Before exiting SKF @ptitude Analyst Configuration Tool, select **SKF @ptitude Transaction Service** on the left-hand side. Make sure this setting is pointing to the newly created database connection. When that is complete, the @ptitude client should be looking at the new location where the Transaction Server service is installed.

For further assistance, please contact the Technical Support Group by phone at 1-800-523-7514 option 8, or by email at TSG-CMC@skf.com.