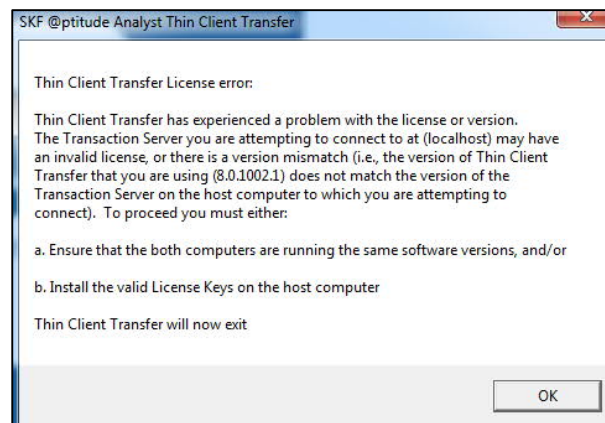


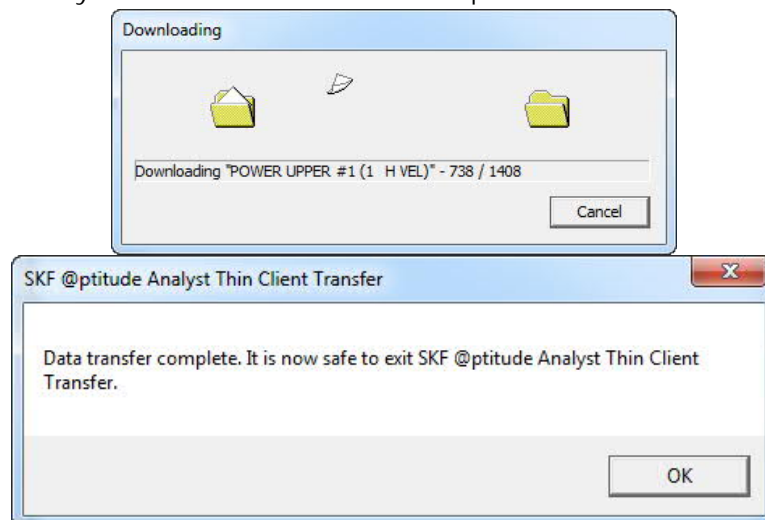
Thin Client Transfer 2013 improvements over the current 2010 & 2012 versions:

#### User Interface

TCT will be downward compatible by at least one version. When connected to an older version a text warning will be displayed suggesting an upgrade or if outside the compatibility range the message will include versions in use and will state an upgrade is required to proceed. Currently both TCT local and cloud Analyst have to be exact version matches. Currently there are no error messages if there is a version issue other than "unable to connect".



More status/progress information being displayed....asset/point counts and progress bar updates. With earlier versions of TCT this info was only available when assets were selected from the hierarchy versus using routes where only the route name was displayed. At times it was difficult to determine the download process actually completed, certainly the user never knew if all the points downloaded.



## Functional Changes

Most MHRP customers are probably unaware that there is a data collector upload file queuing system; this is true for all SKF cloud databases. There is only one communication port open to the database, therefore if multiple users attempt to upload data at the same time the system will start processing the first user and place all others in a queue in the order the upload requests are received. The result can be one person with only a few assets to upload may have to wait a very long time before his upload is processed. The new version of TCT addresses the issue by comparing upload file sizes in the queue; significantly smaller files will be processed ahead of the typical large route uploads.

Since the feature works off of the upload file size, this will work best when using a fresh download or at least clearing the stored/uploaded route data in the data collector prior to collecting the new data. Simply collecting new data over an existing collected route will not change the file size. True the system will only update new data but it will come with the standard wait or longer as the system has to read all the older data.

## Upload/Download File Compatibly

What happens in the worst case where the end user doesn't update TCT prior to uploading his data collector? Provided the data still resides on the data collector 99% of the time an upload file can be created in an older version of TCT and the file will transfer to the database via the latest version of TCT. The user should save his data to an upload file and move that file to a safe place; don't leave the only copy in the default folder. At that point the new TCT can be installed and the user should be able to use the "upload to dB via a file" option using the file created earlier.