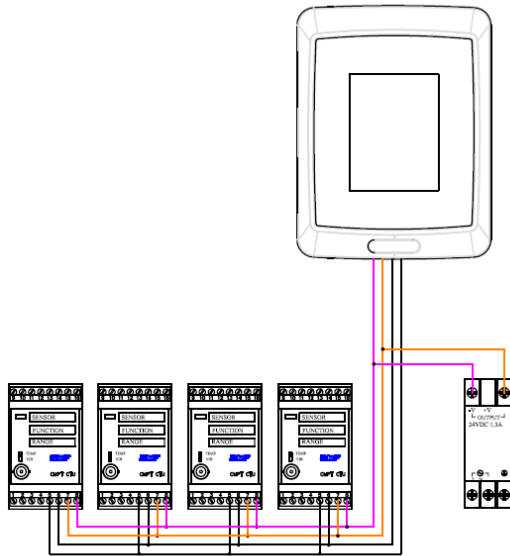


CMPT CPHD XXEC-HMI-4 user guide, Rev00

Up to 64 distributed CMPT CTUs can be connected to one operating terminal. Each CMPT CTU analyzes both vibration and temperature overall levels 24/7. Communication is initiated by the CMPT CTU when alarm occurs. The terminal displays an alarm list including alarm events log and operators acknowledgement of alarms log.

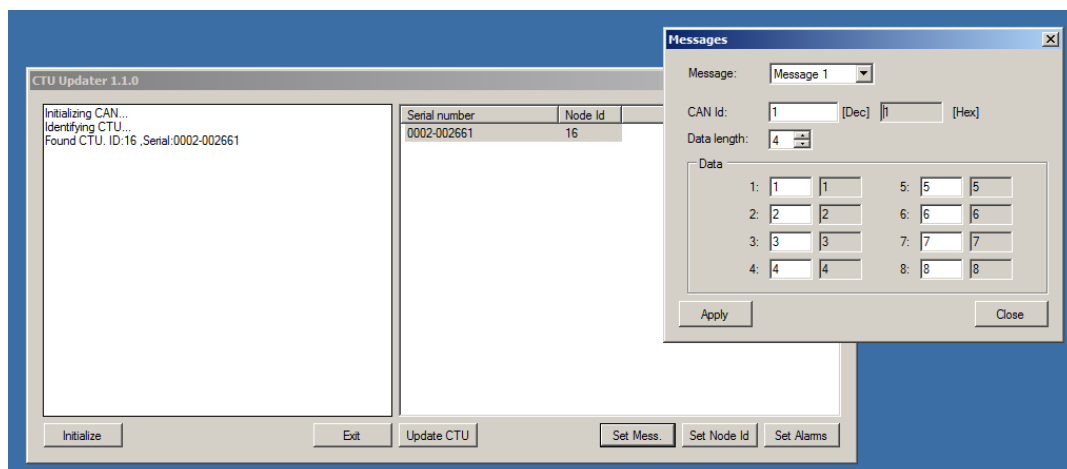
Example of enclosure wiring, CMPT CPHD 04EC-HMI-4.



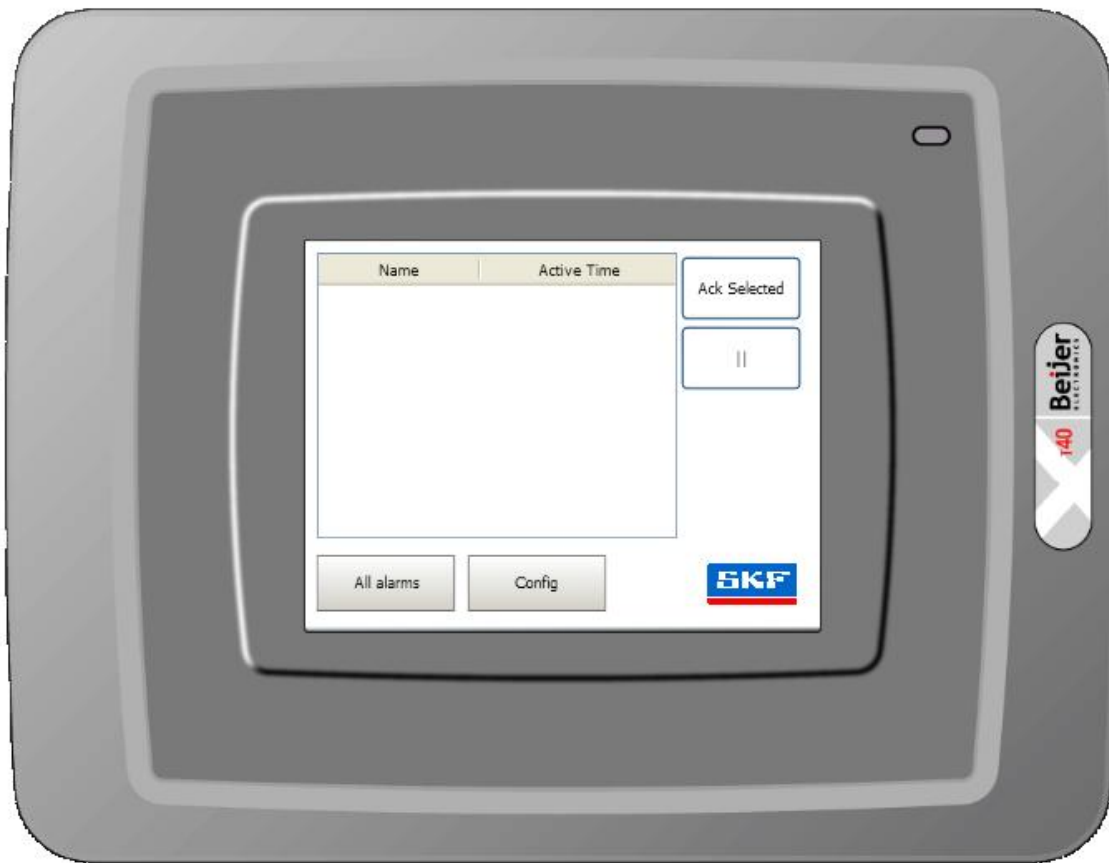
Alarm configuration

Alarms are setup with CMPT CAN and CTU updater PC software. CMPT CAN is connected to the CAN bus and when initialized CTU's is automatically detected. Each CTU can be setup with 4 latching alarms.

- Vibration Danger
- Vibration Alert
- Temperature High
- Sensor fault



Active alarms view



Display all active alarms. Table includes name and alarm activation time.

Ack Selected, used for acknowledge alarms. Alarms are removed from list when acknowledged.

Pause, ||, stops list from adding alarms. No alarms are deleted when paused, all will be added when activated again.

All alarms, change view to all alarms view.

Config, change view to configuration view.

All alarms view

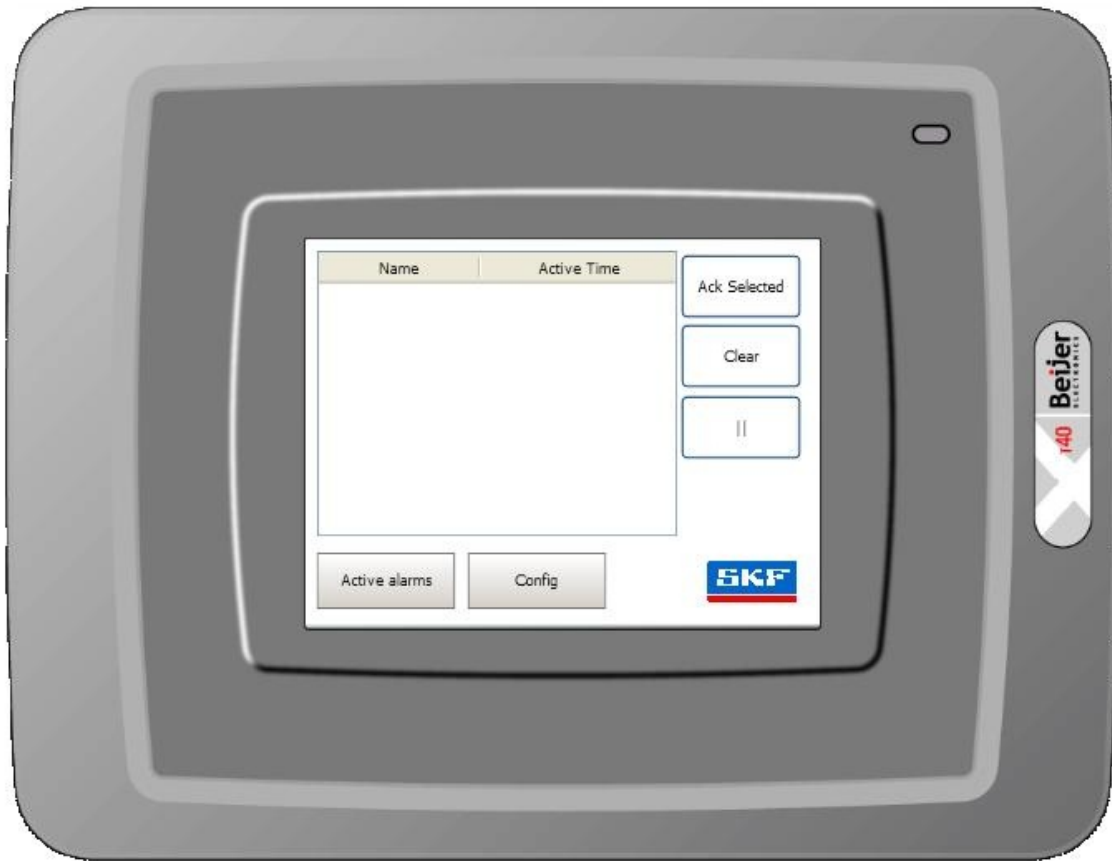


Table includes name, state, alarm activation time and acknowledge time. It will display all alarms including all acknowledged alarms.

Ack Selected, used for acknowledge alarms. Alarms change state when acknowledged.

Pause , || , stops list from adding alarms. No alarms are deleted when paused, all will be added when activated again.

Active alarms, change view to active alarms view.

Config, change view to configuration view.

Configuration view



Time Zone, select time zone, whether to adjust for daylight saving, and region.

Date & Time, set date and time.

Screen light, set backlight and sleep mode.

Save log, save complete log to usb memory. Maximum 1000 logged rows. When the number of collected items becomes larger than the set value, the oldest item will be deleted.

Active alarms, change view to active alarms view.