

## Knowledge Base Article

**Product Group:** Microlog Analyzer

**Product:** Microlog Modules (Recorder)

**Version:** N/A

### Abstract

When importing Microlog Recorder data into SKF Analysis and Reporting Module (ARM) software, only 0.8 seconds of data is transferred. This article describes why this happens and provides a solution to ensure the entire recorded signal gets imported.

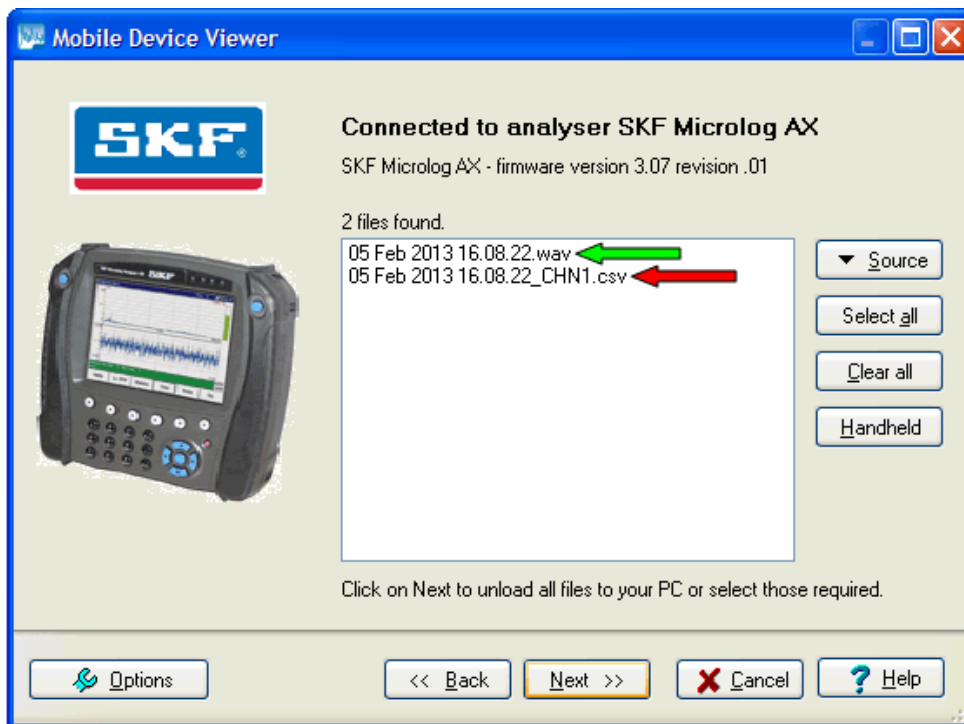
### Overview

With the Recorder module, when data is saved, there are two individual files that are created and saved. One file is a CSV (Comma Separated Value) file and the other is a WAV file.

The Microlog uses the CSV when reviewing the saved Recorder data. However, this CSV file **ONLY** contains the last 0.8 seconds of data. This makes it possible to quickly look to ensure the integrity of the data at the end of the recording. Therefore, the Review directly from within the Microlog will **ALWAYS** be limited to the last 0.8 seconds.

When transferring data into ARM software, it is recommended the **WAV** file be uploaded/imported, as this is the file that contains the entire recorded signal.

ARM's Mobile Device Viewer dialog is shown in Figure 1. Importing the \*.wav file will provide the entire recorded signal, whereas the \*.csv file will **ONLY** contain the last 0.8 seconds of the recorded signal.



**Figure 1.** Two files to choose from in ARM's Mobile Device Viewer

-----  
For further assistance, please contact the Technical Support Group by phone at 1-800-523-7514 option 8, or by email at [TSG-Americas@skf.com](mailto:TSG-Americas@skf.com).