

Knowledge Base Article

Product Group: Microlog Analyzer

Product: CMXA 80 AX; CMXA 75 GX; CMXA 70 GX

Version: 3.07; 2.03

Abstract

An operator can collect more than one measurement on a POINT during a route (using the append option in the Microlog). However, only the most recent measurement for each POINT shows up in @ptitude Analyst after an upload. This article explains what must be done in order for all the measurements on a POINT to appear in the database.

Overview

In @ptitude Analyst, the **Upload measurement history** option [Figure 1] in the **Transfer > Microlog Analyzer** dialog must be checked. If this option is not checked, only the most recent measurement for each POINT will be uploaded, and all of the previously appended measurements will be ignored.

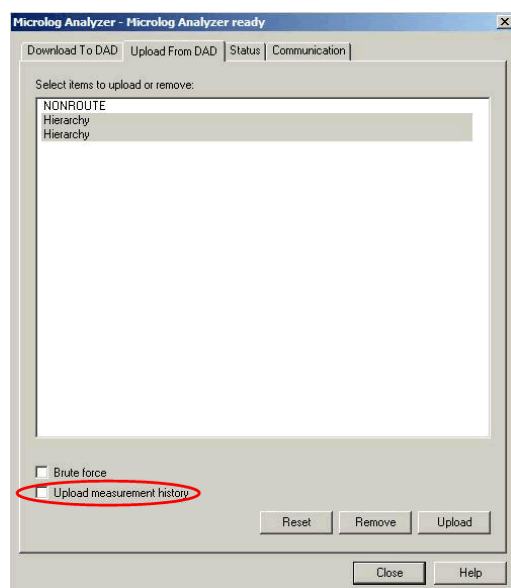


Figure 1. Upload measurement history

For further assistance, please contact the Technical Support Group by phone at 1-800-523-7514 option 8, or by email at TSG-Americas@skf.com.