

Knowledge Base Article

Product Group: MARLIN I-Pro

Product: CMDM 6600 Microlog Inspector / CMAC 6156 Rev. B Ethernet Adapter

Version: N/A

Abstract

The CMDM 6600 Microlog Inspector series requires the installation of drivers to connect to the CMAC 6156 **Rev. B** Ethernet Adapter. This article provides information on how to properly install the driver.

Overview

The following items are required to complete the driver installation:

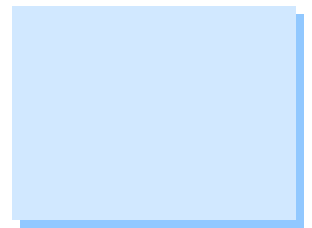
- CMDM 6600 hand held computer
- **00002913_CN3_CN4_Ethernet_Support.cab** file
 - This file is available for download on skf.com. Sign in to skf.com, access skf.com/cm/updates, and follow the **SKF Microlog Inspector / CMAC 6135-E and CMAC 6156 Drivers - Download now** links to download the file.
- Computer with Microsoft ActiveSync or Windows Mobile Device Center
- CMAC 6136 docking station with USB connection to computer
 - The CMAC 6136 docking station is required for transferring files between the computer and the Microlog Inspector.

These instructions are printed on a yellow/orange document and are included in all CMAC 6156 shipments.

Driver Installation

Perform the following steps to install the drivers:

1. Connect the CMDM 6600 Microlog Inspector to the computer using the CMAC 6136 docking station and USB cable, and confirm that ActiveSync or Mobile Device Center connects successfully.
2. Copy the **00002913_CN3_CN4_Ethernet_Support.cab** file into the Microlog Inspector's **Program Files** folder using **File Explorer**.
3. On the Microlog Inspector, using File Explorer, locate the CAB file in the Program Files directory and tap it to install the driver.
4. Tap **OK** after the driver installation is complete; the device automatically resets.



Connecting the CMAC 6156 Ethernet Adapter

The diagrams below [Figure 2] illustrate how to connect the CMAC 6156 Ethernet Adapter to the CMAC 6136 docking station. The Ethernet LEDs light up when a docked Microlog Inspector communicates with the dock or with the Ethernet network, according to the table below:

LED Indicator	
Steady green	Hand held is communicating with the dock.
Flashing green	Hand held is communicating with the Ethernet network.
None	Hand held is not communicating with the dock, or the dock is not connected to power.

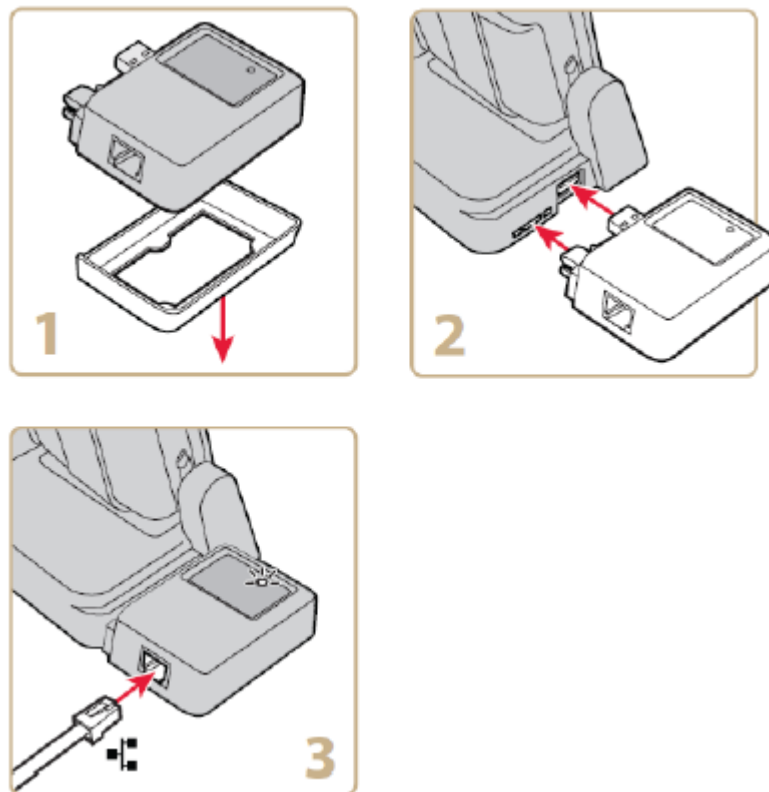


Figure 2. Connection diagrams

 For further assistance, please contact the Technical Support Group by phone at 1-800-523-7514 option 8, or by email at TSG-Americas@skf.com.