

# Knowledge Base Article

**Product Group:** Software

**Product:** CMSW7302 - @ptitude Analyst Work Notification

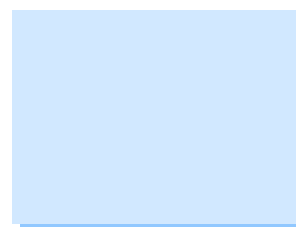
**Version:** MA/@A 3.1 or higher / MARLIN 4.1 or higher / Microlog Inspector 1.1 or higher

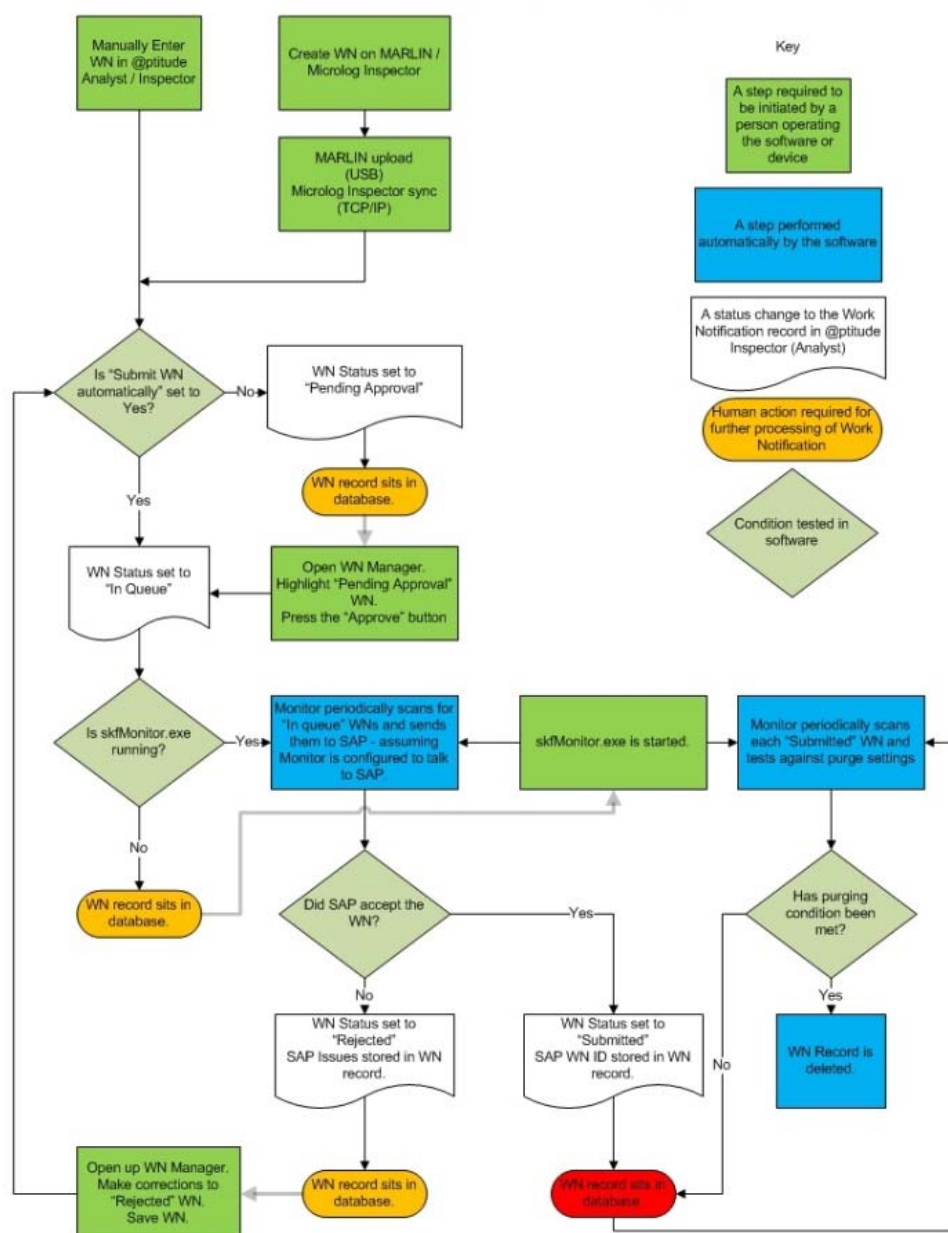
## Abstract

When installing and configuring the Work Notification add-on in SKF @ptitude Analyst, understanding the workflow process is important. The flow chart provided in this article illustrates the work notification cycle, which can serve as a basic troubleshooting tool.

## Overview

The following flow chart [Figure 1] shows the Work Notification add-on life cycle:





**Figure 1.** @ptitude Inspector or Analyst & Microlog Inspector or MARLIN Work Notification processing and status changes

For further assistance, please contact the Technical Support Group by phone at 1-800-523-7514 option 8, or by email at [TSG-Americas@skf.com](mailto:TSG-Americas@skf.com).