

Knowledge Base Article

Product Group: Software

Product: CMSW7700 - @ptitude Monitoring Suite

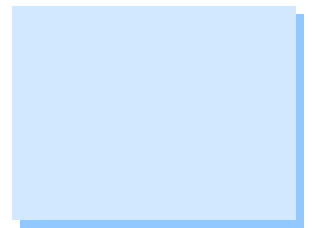
Version: N/A

Abstract

SKF has a proprietary file called Machine Analyst Binary, or MAB. This file can only be created, viewed, and imported/exported using SKF @ptitude Suite or BVAS software. The .mab file is encrypted, and its contents are viewable only via the SKF software line. This article describes three methods of importing data into @ptitude Analyst using .mab files.

Overview

Machine Analyst Binary (.mab) files are imported for various reasons. A .mab file may be imported to review measurements of POINTs that do not exist in a database, to update information on machines that already reside in the database, or simply to add measurement data to existing points.



When importing a .mab file, there are three options to choose from. [Figure 1]

- Append
- Update
- Merge Measurements

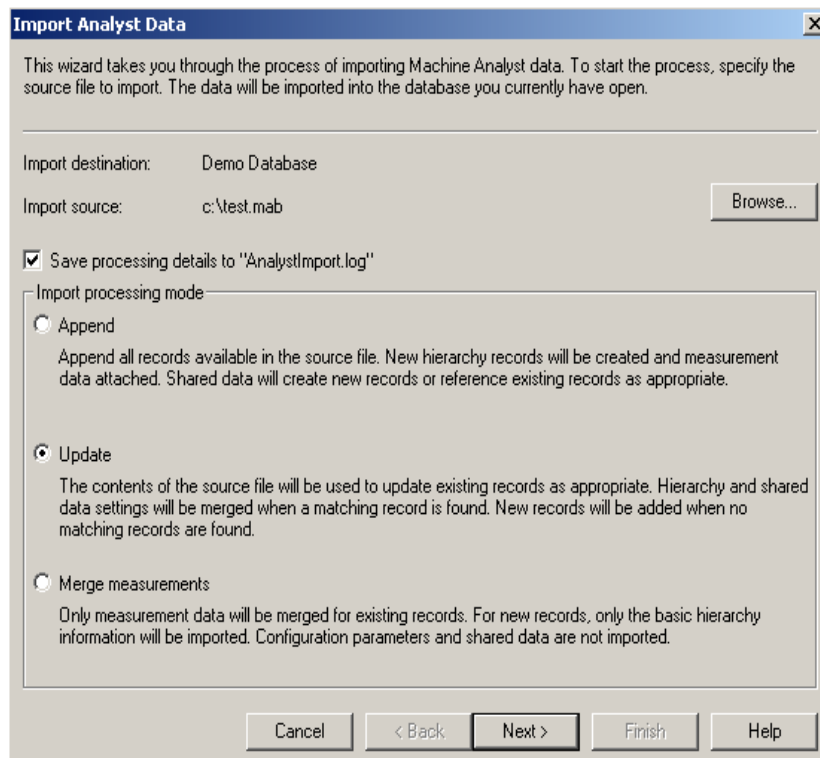


Figure 1. Import options

Append

Append all records available in the source file. New hierarchy records will be created and measurement data attached. Shared data will create new records or reference existing records as appropriate.

Update

The contents of the source file will be used to update existing records as appropriate. Hierarchy and shared data settings will be merged when a matching record is found. New records will be added when no matching records are found.

Merge Measurements

Only measurement data will be merged for existing records. For new records, only the basic hierarchy information will be imported. Configuration parameters and shared data are not imported.

For further assistance, please contact the Technical Support Group by phone at 1-800-523-7514 option 8, or by email at TSG-Americas@skf.com.

