

Knowledge Base Article

Product Group: Software
Product: CMSW7400 - @ptitude Analyst
Version: 6.3

Abstract

This article explains how to resolve the error "SQLCMD is not recognized as an internal or external command" when attempting to update the database for SKF @ptitude Analyst.

Overview

Go into **System Properties > Advanced > Environment Variables**, and locate the variable "Path". [Figure 1]

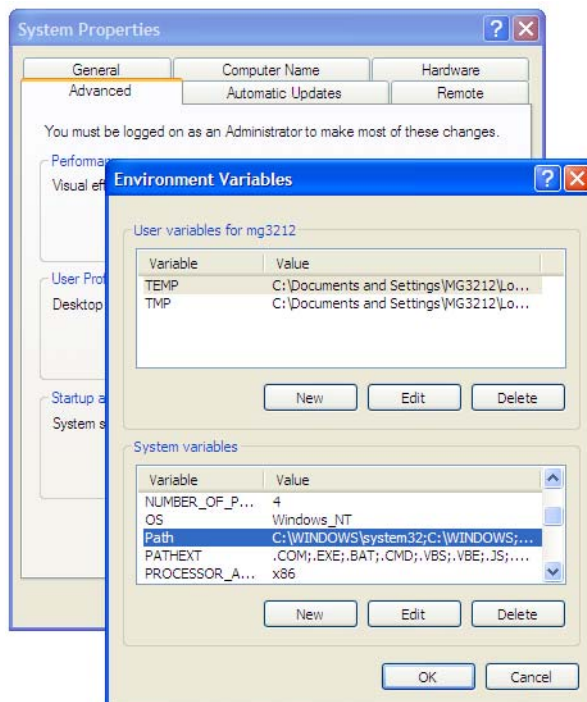


Figure 1. Locate System Variable "Path"

If this error is occurring, the value for Path will be blank.

To fix the error, edit the variable **Value** by adding the string:

C:\Program Files\Microsoft SQL Server\100\Tools\Binn

Save the changes by pressing **OK**. The database may now be updated using the SKF @ptitude Analyst Configuration Tool as normal.

For further assistance, please contact the Technical Support Group by
phone at 1-800-523-7514 option 8, or by e-mail at TSG-CMC@skf.com.

