

Knowledge Base Article

Product Group: Software

Product: CMSW7400 - @ptitude Analyst

Version: 4.0 and higher

Abstract

This article describes three different ways to attach a Microsoft SQL Server 2005 or 2008 database.

Overview

In order to transfer an existing Microsoft SQL Server 2005 or 2008 database to an existing server or computer, the **Attach Database** function in SQL Server Management Studio may be used. Other methods involve using SQL query commands or else commands performed on the Windows Command Line.

The database files **skfuser.mdf** and **skfuser.ldf** for a SKF @ptitude Analyst database is needed in order to proceed.

Verify the following to ensure the proper read-write access is assigned to the database:

- Confirm the skfuser.mdf database file is not Read-Only. To do this, right-click on the file and select Properties to verify the Read-Only attribute is not checked.
- Confirm the folders containing the database files are not Read-Only. To do this, right-click on each of the folders and subfolders and select Properties to verify the Read-Only attribute is not checked.
- Confirm the user has administrative rights to that computer.

Option One - Attach Using Attach Function in SQL Server Management Studio

1. Open SQL Server Management Studio and connect as SA user.
2. Right-click on **Databases** and select **Attach...** [Figure 1]

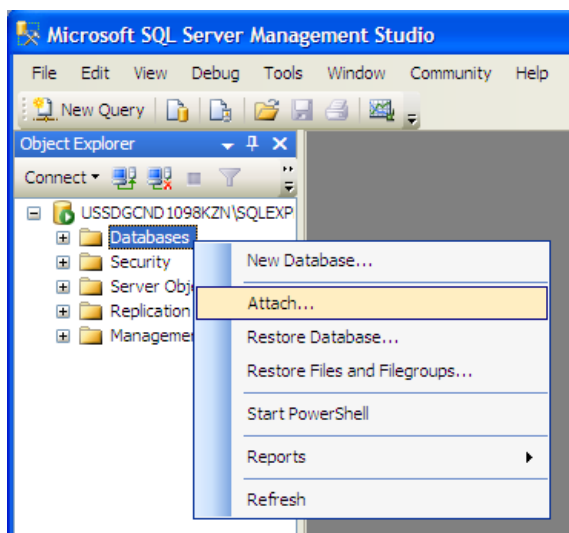


Figure 1. Attach database option

3. Press **Add** in the Attach Databases window.
4. Select the desired .mdf database file from the Locate Database Files window [Figure 2], and then press **OK**.

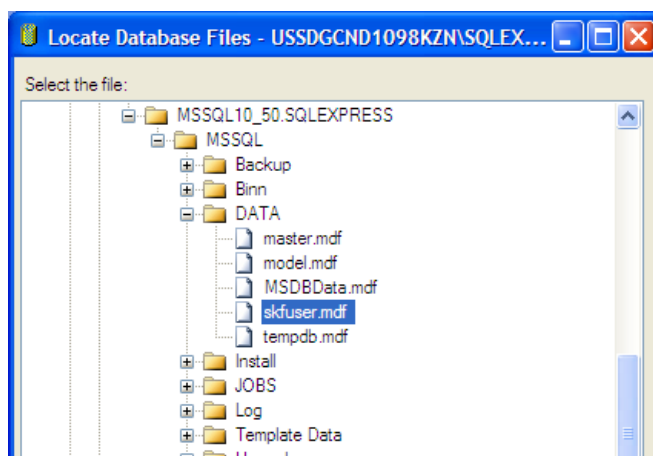


Figure 2. Locate database file

- Next, press **OK** in the Attach Databases screen. [Figure 3]

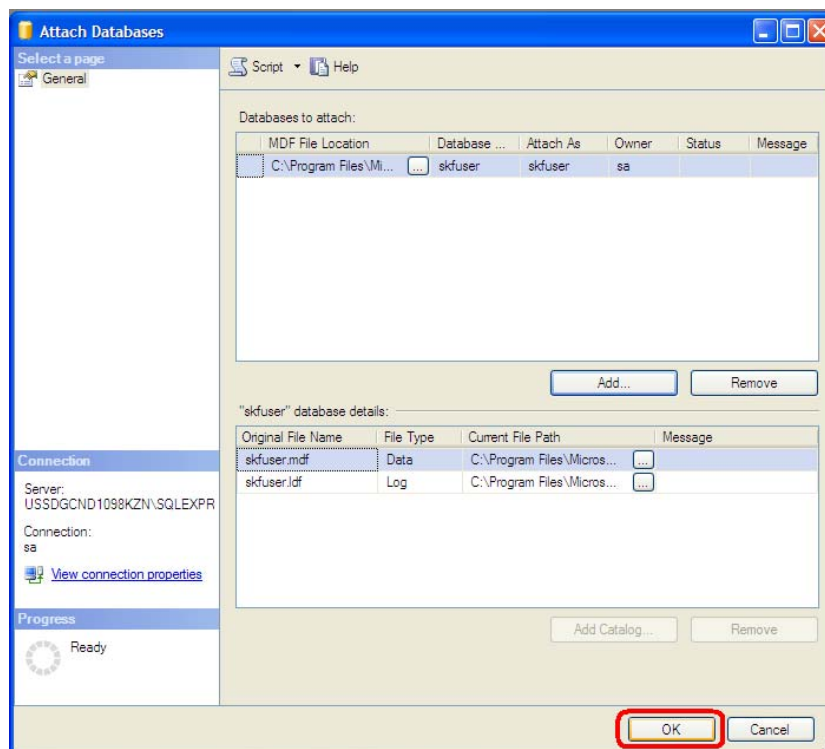


Figure 3. Press OK to proceed

- IMPORTANT!** Continue to section [After Attaching a Database](#) below.

The Attach Database operation using the Attach function SQL Server Management Studio is complete.

Option Two – Attach Using Query Screen in SQL Server Management Studio

1. Open SQL Server Management Studio and connect as SA user.
2. Press **New Query** and paste the SQL statement below into the query window, then press **Execute**. The statement below may need to be edited depending upon where the skfuser.mdf and skfuser.ldf files are located.

```
use master
go
sp_attach_db 'skfuser', 'C:\Program Files\Microsoft SQL
Server\MSSQL10_50.SQLEXPRESS\MSSQL\DATA\skfuser.mdf',
'C:\Program Files\Microsoft SQL
Server\MSSQL10_50.SQLEXPRESS\MSSQL\DATA\skfuser.ldf'
```

3. Next, paste the following command into the query window to verify the database is attached, then press **Execute**.

```
use skfuser
go
sp_helpfile
```

4. **IMPORTANT!** Continue to section [After Attaching a Database](#) below.

The Attach Database operation from the query window is complete.

Option Three – Attach Using the Windows Command Line

1. Use the following commands to attach a database using the Windows Command Line. The command below may need to be edited depending upon where the skfuser.mdf and skfuser.ldf files are located.

```
OSQL -S USSDGMT414ZZB1 -U sa -P skf -Q "sp_attach_db  
'skfuser',  
'C:\Program Files\Microsoft SQL  
Server\MSSQL10_50.SQLEXPRESS\MSSQL\DATA\skfuser.mdf',  
'C:\Program Files\Microsoft SQL  
Server\MSSQL10_50.SQLEXPRESS\MSSQL\DATA\skfuser.ldf' "
```

2. **IMPORTANT!** Continue to section [After Attaching a Database](#) below.

The Attach Database operation using the Windows Command Line is complete.

After Attaching a Database

The **Rebuild_loginname_username_links.sql** script MUST be executed after the database is attached in order to log in to SKF @ptitude Analyst. This script must be executed using the SA or ADMINISTRATOR login of SQL Server.

On a computer where SKF @ptitude Analyst is installed, the script can be found in the following location:

```
C:\Program Files\SKF-RS\SKF @ptitude  
Analyst\DBAssist\SQL Server
```

The script can also be located on the installation DVD in the following location:

```
\Tools\SQLScripts\SQL Server
```

1. Double-click on the script to open it in the query window in SQL Server Management Studio.
2. Press **Execute**. If the command was completed successfully, exit SQL Server Management Studio and log in to SKF @ptitude Analyst to verify the database was attached.

For further assistance, please contact the Technical Support Group by phone at 1-800-523-7514 option 8, or by email at TSG-Americas@skf.com.