

Knowledge Base Article

Product Group: Software

Product: CMSW7311 - Analysis and Reporting Module

Version: N/A

Abstract

When the embedded version of SKF Analysis and Reporting Module (ARM) is launched from within @ptitude Analyst, an error message [Figure 1] is displayed. This article provides a way to resolve the error.

"Error creating X Modules main window"

"Retrieving the COM class factory for component with CLSID {E712CE0E-4C7B-40E6-B4EE-1ED807F38A7B} failed due to the following Error: 80040154"

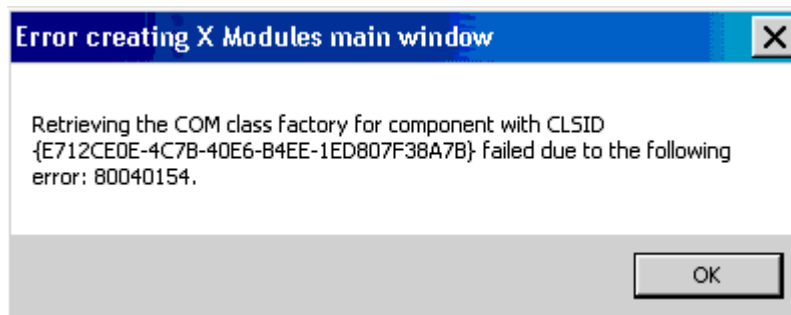


Figure 1. Error creating X Modules

Overview

To resolve the error, search the registry (**Edit > Find...**) for CLSID "E712CE0E-4C7B-40E6-B4EE-1ED807F38A7B" and then review its **Permissions** to verify who the owner is. Edit the key to reflect the correct owner or else administer full admin access of the PC to the user.

Reboot the PC and log back into SKF @ptitude Analyst to launch the ARM application. The error message should no longer be seen.

For further assistance, please contact the Technical Support Group by phone at 1-800-523-7514 option 8, or by email at TSG-Americas@skf.com.