

Knowledge Base Article

Product Group: Software

Product: CMSW7321 - @ptitude Analyst TCT-Direct

Version: N/A

Abstract

This article describes how Thin Client Transfer (TCT) can be set up to connect to cloud-based RDC servers.

Overview

Follow the steps below to configure the TCT application for connection to a cloud-based RDC server.

1. Begin by installing the TCT application onto the local PC.
2. Navigate to **Start > Programs > SKF @ptitude Monitoring Suite > SKF @ptitude Analyst Thin Client Transfer**, and right-click on the program.
3. Select **Create Shortcut** from the drop down menu. [Figure 1] Then, drag the shortcut onto the desktop.

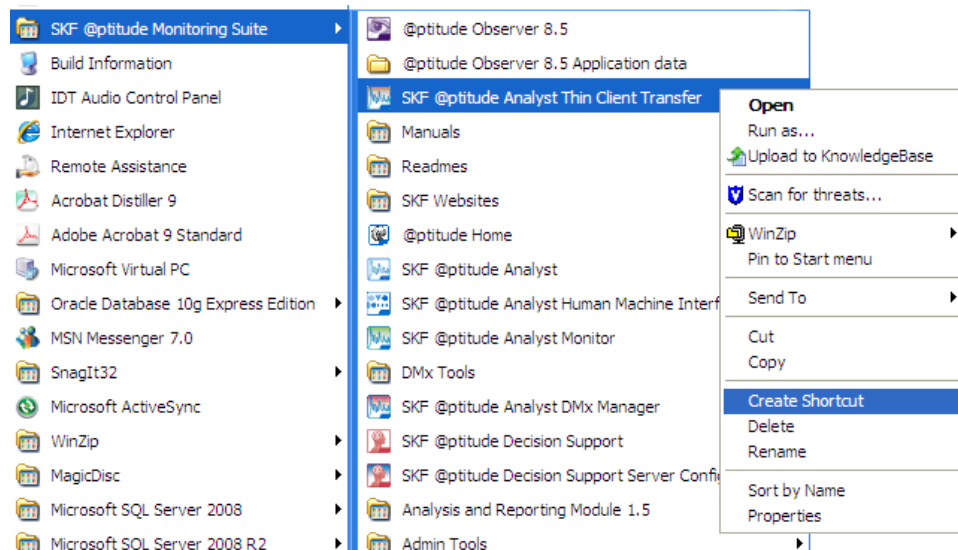


Figure 1. Create TCT shortcut

4. Right-click the shortcut and select **Properties** from the drop down menu. [Figure 2]

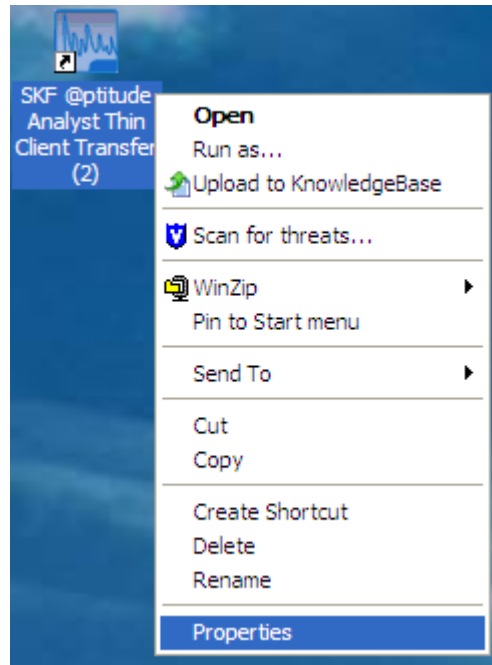


Figure 2. Shortcut properties

5. Go to the **Shortcut** tab. In the **Target:** field, add the following command line parameter.

- After the closing quotation, press the **[space bar]** on the keyboard once, then add the following:

-TS:<IP Address or Domain Name>,<Port Number>

- **Example:** For the MHRP server, the following would be used:
[Figure 3]

-TS:mhrp.cmcrcd.com,8088

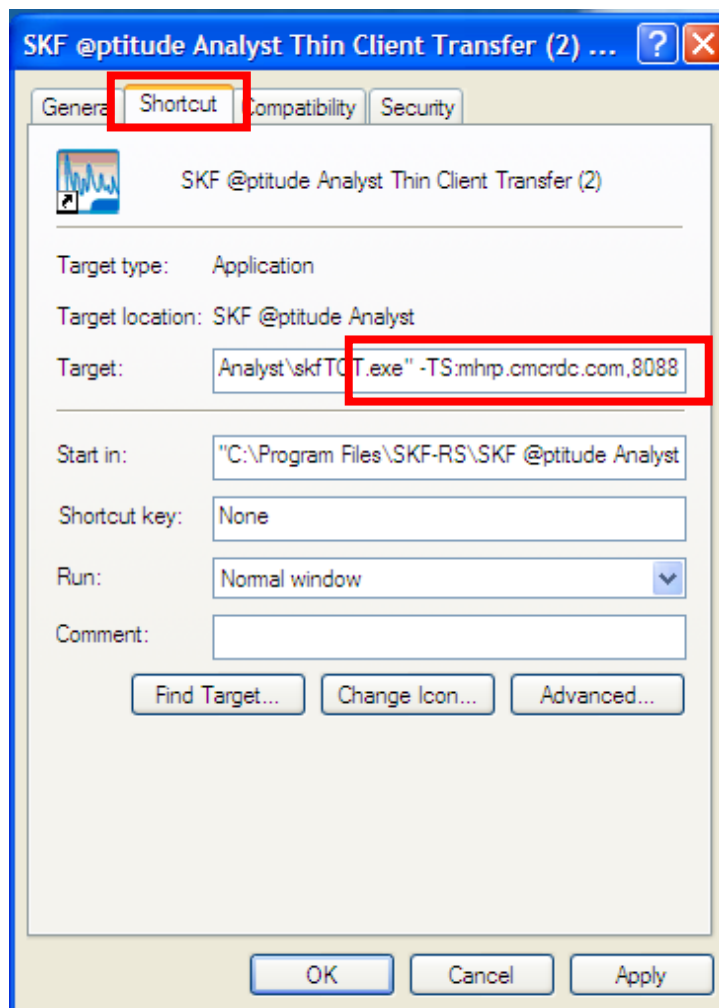


Figure 3. Target path with MHRP server information

6. Finally, click **Apply**, then click **OK**.

NOTE: *TCT is an application that uses TCP/IP to communicate from a PC to a remote server. Thus, the network(s) being used must allow data to be sent **to** the RDC server, and must allow traffic **from** the server back in to the PC.*

Ensure that routers and firewalls are configured appropriately. Software-based firewalls on individual PCs should be configured to allow TCT to function.

Consult with IT personnel responsible for the network that TCT will run on to ensure these requirements are met.

