

Inquire – Knowledge Base Article

Product Group: Software

Product: CMSW7400 @ptitude Analyst

Version: N/A

Abstract

This article discusses how to resolve a corrupted Speed Tag error on a GX Microlog when downloading a machine.

Overview

Some of the points within this part of the hierarchy have a corrupted Speed Tag value, which is the cause of the error. Generally, the value of the Speed Reference Point will be seen, otherwise <No speed tag assigned> will be displayed. However no value is displayed, as shown in Figure 1.

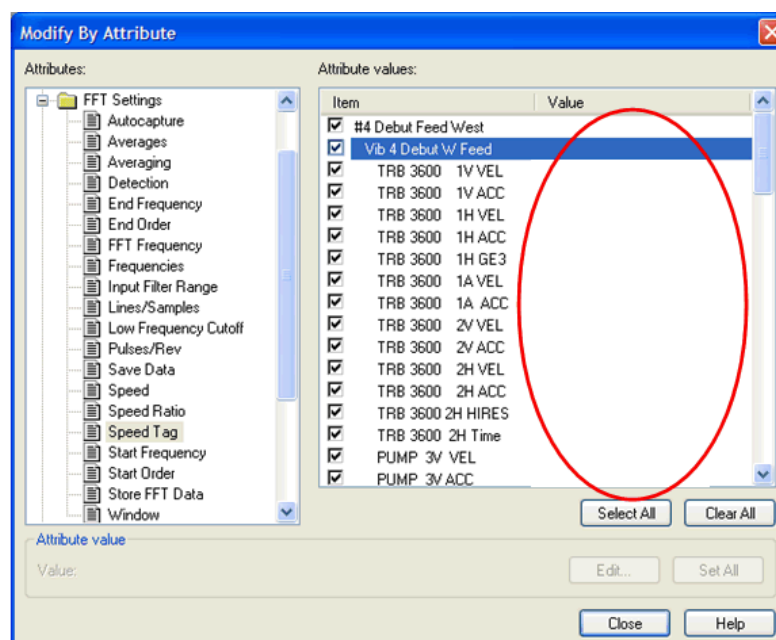


Figure 1. Corrupted Speed Tag value

Scrolling further down the values list, there are some points that have the <No speed tag assigned> value. To resolve this error, select an item showing this <No speed tag assigned> value, and then press [Set All]. This will update the corrupted points, as shown in Figure 2.

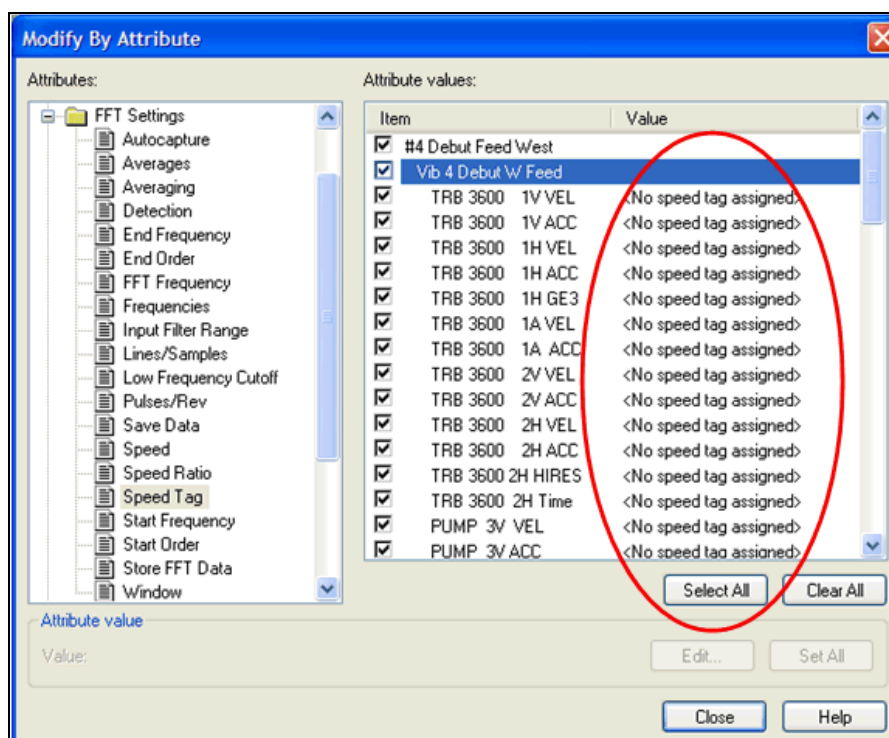


Figure 2. Updating corrupted points

Finally, clear the Microlog and re-download the machines to avoid experiencing the error again.

For further assistance, please contact the Technical Support Group by phone at 1-800-523-7514 option 8, or by email at tsg-americas@skf.com.