

Analysis and Reporting Module

Creating Balancing module reports

By Simon Innes • SKF

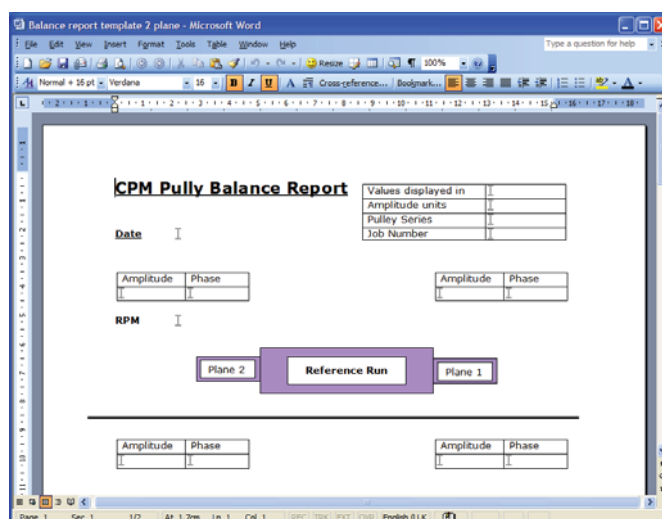
With SKF's Analysis and Reporting Module version 1.5, it is now possible to produce detailed and customized reports from your balance module results, using the Microsoft® Word Report Generator Expert. Field names in the balance report file are used to attach results to bookmarks defined in a Microsoft Word template (.dot) file, allowing you to produce balance reports using your company standard formats.

The balance report file as unloaded from your analyzer contains two columns of text information. The left column is the name of the parameter measured or set and the right column shows the value recorded:

```
Plane1-Type:      1 Fixed
Plane1-NoPositions: 3
Plane1-Offset:    0.000000
Plane1-Couplings: 0 %
Plane1-ICP:      1 Yes
```

The left column entries are listed by the Microsoft Word Report Generator Expert as fields supplying values for output. If you select one of these fields, for example, "Plane1-Type" and associate it with a bookmark in the Microsoft Word template, from the example above, a value of "Fixed" would be written to the report document.

A set of sample templates are shipped with the software, including two specifically for balance reports. Opening the template in Microsoft Word shows the bookmarks defined^[1]:

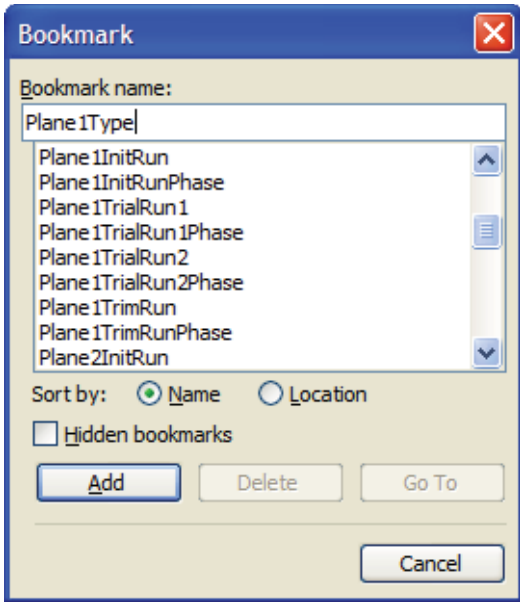


If you cannot see the bookmark symbols (shown as an I-beam symbol thus |), go to **Tools / Options** and check the **Bookmarks** control on the **View** tab.

You can use Microsoft Word to create a template for your reports containing any sort of information or layout you wish, including graphics like company logos. The full power of Microsoft Word is available for you to create the report as you like it.

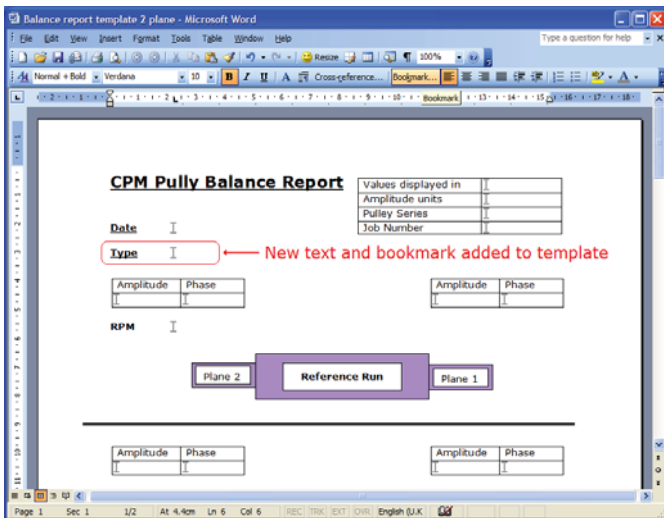
Bookmarks are used to define locations where SKF Analysis and Reporting Module will be able to write out values when creating a document using this template. It is best if you name the bookmarks using the same field identifiers as used in the balance report.

For example, to define a bookmark to receive information on “Plane1-Type” as in the example above, select the position in the template where this information is to go and choose **Insert | Bookmark** from the menu. You can then enter the bookmark name in the **Bookmark** dialog^[1]:



- Note that your bookmark names cannot include any spaces or hyphens.

When you click **Add**, the bookmark will be added to your template^[1]:

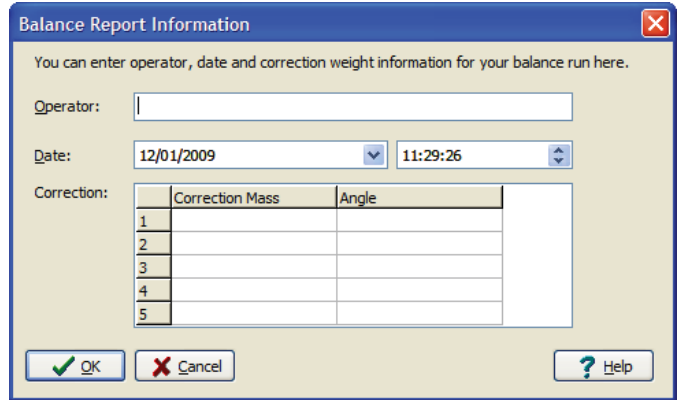


Once you have set up and saved your template file (make sure that you have opened it as a template rather than created a new document from it) you will be ready to set up a Microsoft Word Report in SKF Analysis and Reporting Module to use to create balance reports.

In the SKF Analysis and Reporting Module window, open or select a balance report (.bal) file – the contents will be shown in the right panel of the main window.

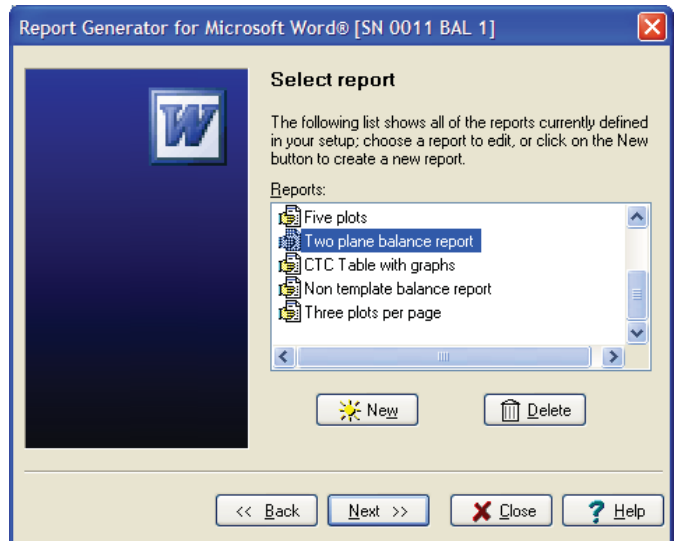
There is some extended data that may be entered to supplement the information from the balance file – this data is entered using a special form in SKF Analysis and Reporting Module and is stored with the balance report in the .pds file.

To enter or edit the extra balance report data, go to **Edit | Enter balance report data**. This will open up the **Balance Report Information** dialog^[1]:



The main information entered here is up to five pairs of correction weight data – you can enter both a mass and an angle for each. You may also put in a date and time and the operator name.

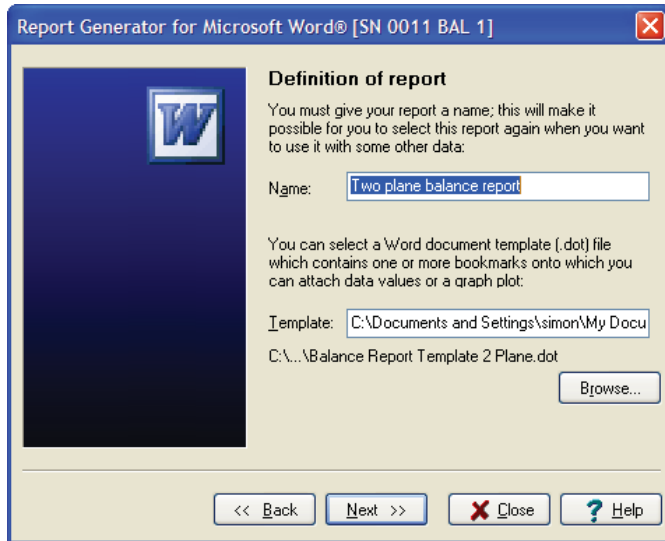
When you are ready to produce the report, choose **Reports | Microsoft Word Report Generator Expert**. On the welcome page, click **Next** to go to the page for selection or creation of reports^[1]:



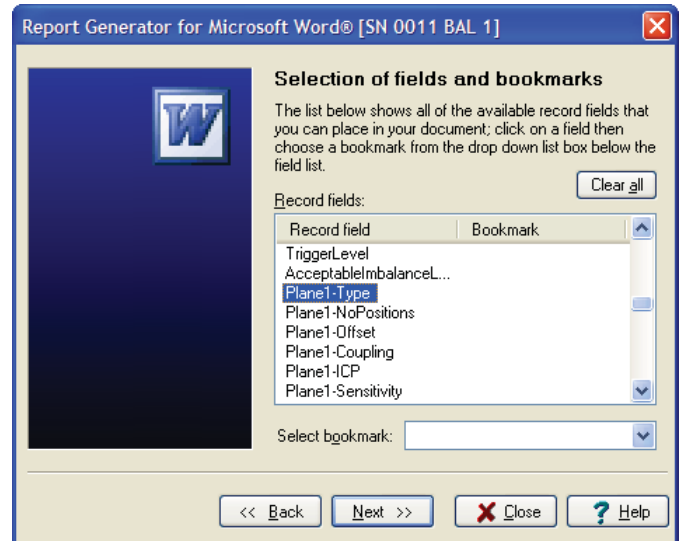
You can either create a new report or use one of the pre-defined ones. SKF Analysis and Reporting Module ships with a sample report that works with the two-plane balance report template. If you are using this template or a modified version of it, select that report, otherwise, you could create a new one by clicking the **New** button.

Once you have made your selection, click on **Next** to go on with defining the report.

On the next page, you can edit the report name and choose the template^[4]:

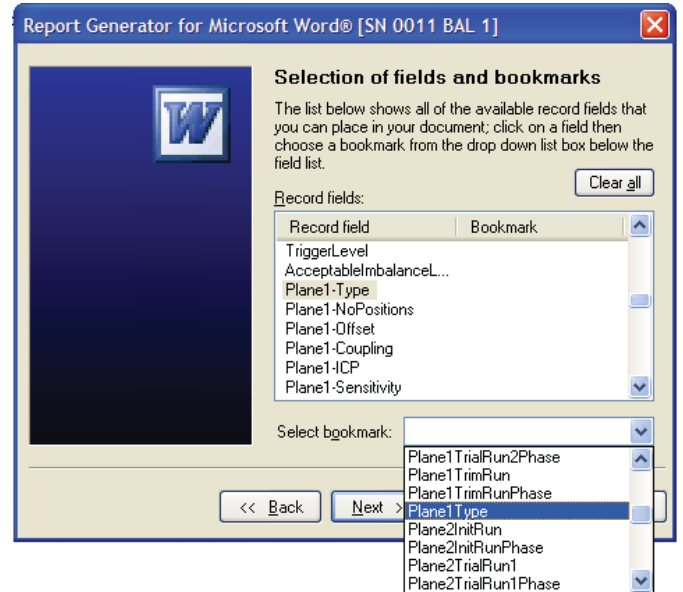
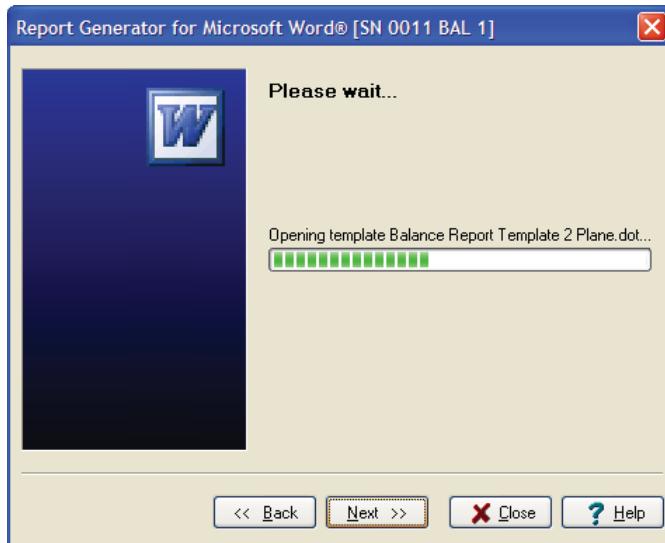


The report is set up by assigning bookmarks in your template to these fields; for instance, to get the type of plane one in the report, you need to select the field called "Plane1-Type" and assign a bookmark to it^[4]:



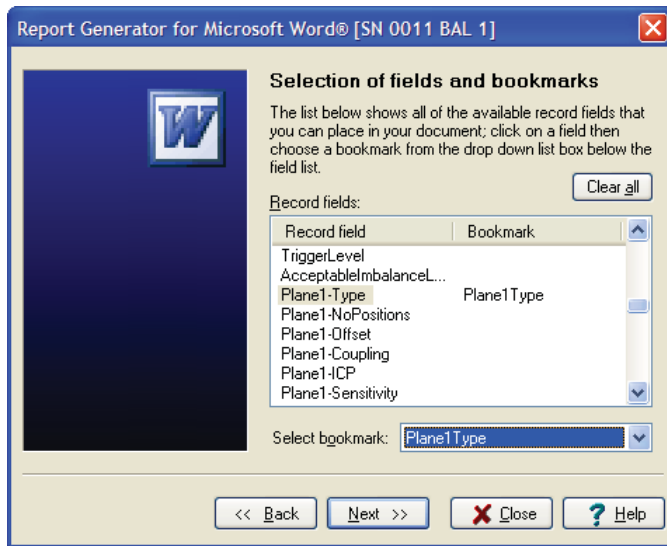
Make your selections and click on **Next**. The application will load the template specified and read its bookmarks^[1]:

Use the **Select bookmark** drop-down list, which contains all of the bookmarks read from the template, to select the new bookmark we defined earlier called "Plane1Type"^[1]:

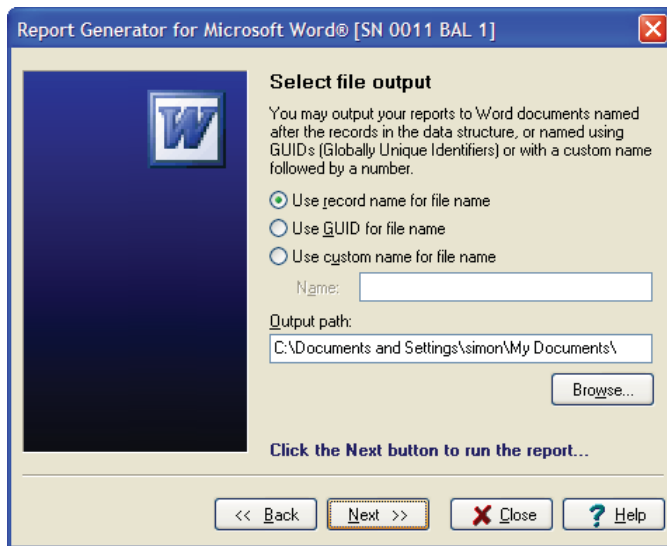


This leads to a page where you can choose the bookmarks from your template. In the list box on this page are listed the record fields that the software recognises as being available for a balance report.

You can now select this bookmark to be the place in the document where the value for Plane1-Type can be written^[1]:



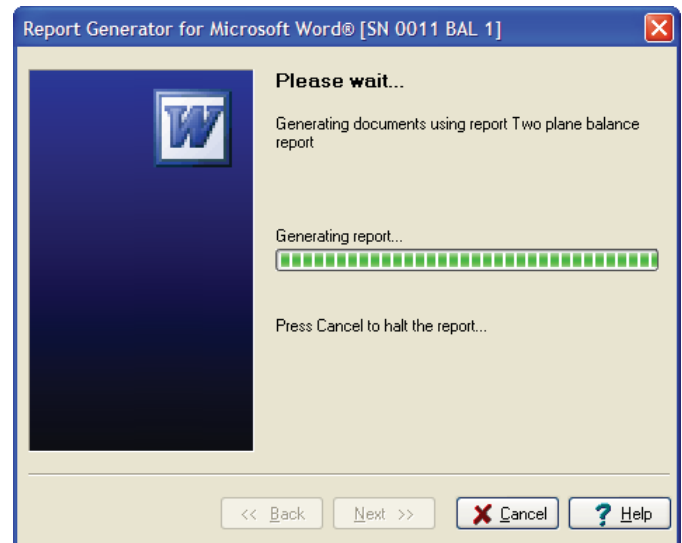
When you have selected all of the bookmarks you need, click **Next** to go to the page where you can choose where the file will be created and how it will be named^[1]:



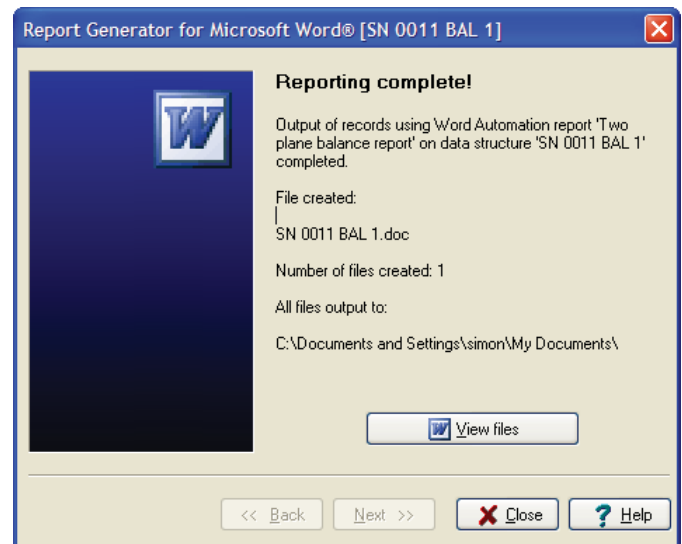
You can use the record name for the document, generate a unique GUID or enter a name manually. Duplicated file names will have a number added on creation to ensure nothing gets overwritten.

You can also choose the output path for the document – this defaults to your own personal documents path, but can be changed to any other path. This value is stored as part of the report set up, so you can have different reports writing files to different locations if required.

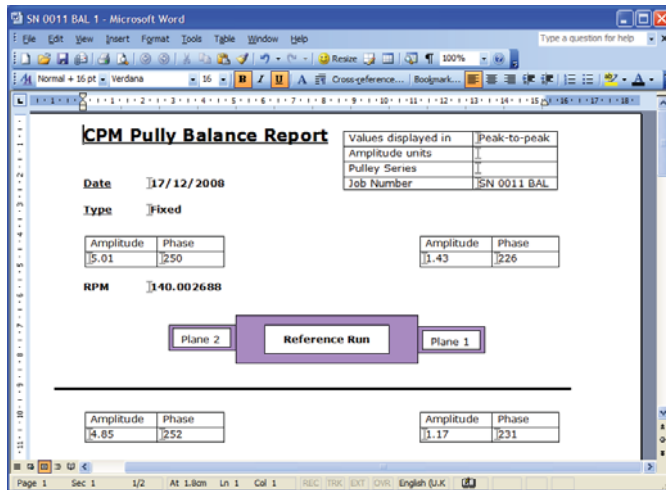
Click **Next** to generate the report document; a progress bar will show the report creation progress^[1]:



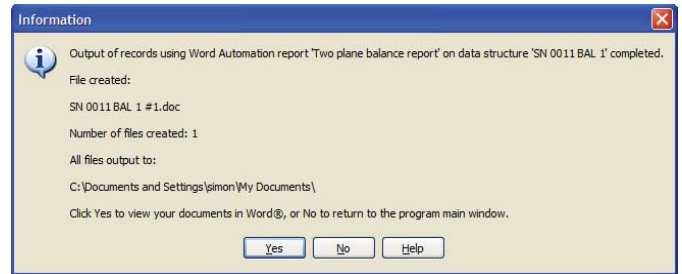
Once complete, a summary page will be shown which includes a button you can click to view the actual file created in Microsoft Word^[1]:



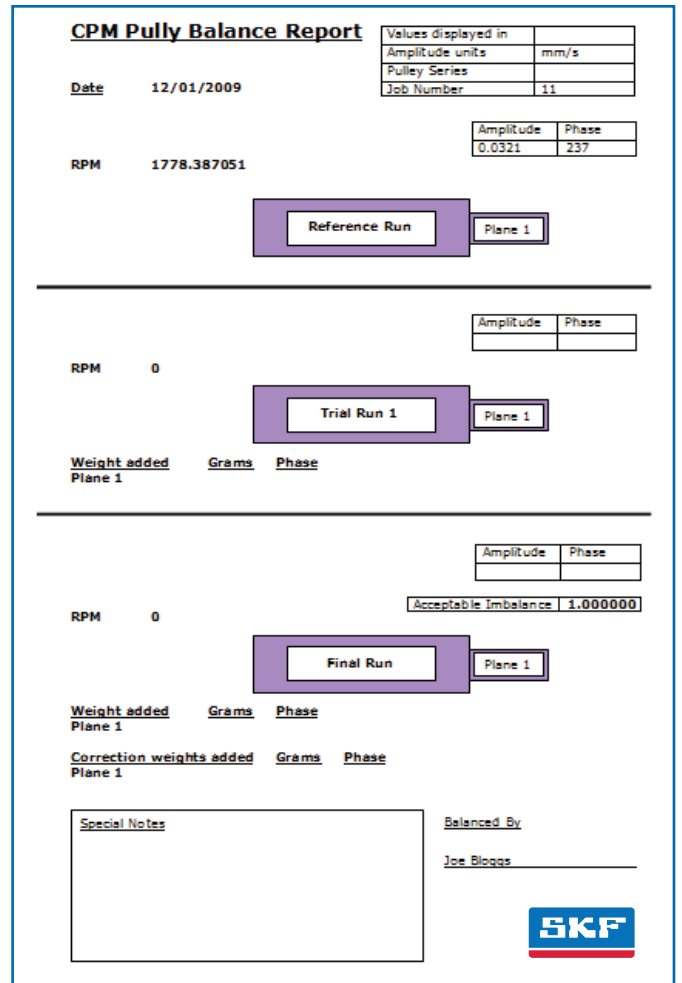
Click the **View files** button to display your completed and saved balance report^[1]:



Once the report has been run, a message dialog will show you the results of the operation and allow you to view the document created:

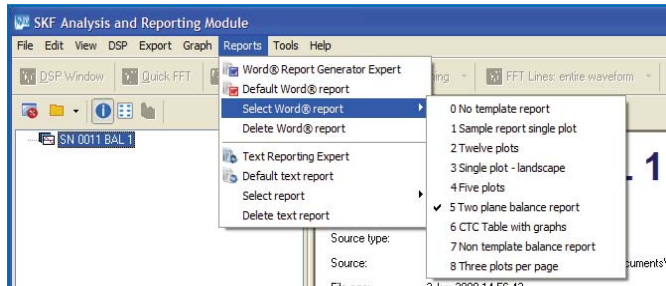


Here is an example of a single plane balance report:



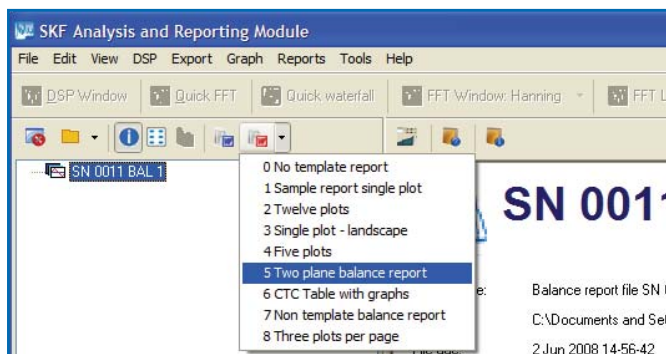
You can see the value of “Fixed” has been written to the “Plane1Type” bookmark that we defined earlier.

You may define any number of different reports in SKF Analysis and Reporting Module for creating Microsoft Word documents, using any templates that you create or modify. The software automatically saves any changes you make to your reports and there is a handy quick report function that you can call up to run the last selected report on your data and run it directly without having to go through any of the editing process:



The **Default Word report** option will run the last report you used or you can choose **Select Word report** to run (without modifying) any other previously defined report. (The default report is shown with a tick).

You can also access these functions directly from the toolbar:



[1] Microsoft Word screen shots reprinted with permission from Microsoft Corporation.

Here is an example of a two plane balance report:

CPM Pulley Balance Report		Values displayed in	Peak-to-peak
Date	17/12/2008	Amplitude units	
Type	Fixed	Pulley Series	
		Job Number	SN 0011 BAL

Amplitude	Phase	Amplitude	Phase
5.01	250	1.43	226

RPM 140.002688

Plane 2	Reference Run	Plane 1
---------	---------------	---------

Amplitude	Phase	Amplitude	Phase
4.85	252	1.17	231

Plane 2	Trial Run 1	Plane 1
---------	-------------	---------

Weight added	Grams	Phase
Plane 1		
Plane 2		

Amplitude	Phase	Amplitude	Phase

Plane 2	Trial Run 2	Plane 1
---------	-------------	---------

Weight added	Grams	Phase
Plane 1	97.1	88.3
Plane 2		

Amplitude	Phase	Amplitude	Phase


Plane 2	Final Run	Plane 1
---------	-----------	---------

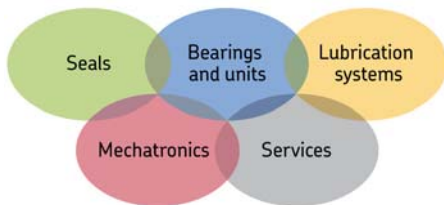
Weight added	Grams	Phase
Plane 1		
Plane 2		

Correction weights added	Grams	Phase
Plane 1		
Plane 2		

Special Notes

Balanced By _____





The Power of Knowledge Engineering

Drawing on five areas of competence and application-specific expertise amassed over 100 years, SKF brings innovative solutions to OEMs and production facilities in every major industry worldwide. These five competence areas include bearings and units, seals, lubrication systems, mechatronics (combining mechanics and electronics into intelligent systems), and a wide range of services, from 3-D computer modelling to advanced condition monitoring and reliability and asset management systems. A global presence provides SKF customers uniform quality standards and worldwide product availability.

For additional information on SKF products, contact:

SKF USA Inc.

5271 Viewridge Court • San Diego, California 92123 USA
 Telephone: +1 858-496-3400 • FAX: +1 858-496-3531

Web: www.skf.com/cm

© SKF is a registered trademark of the SKF Group.
 Microsoft is a registered trademark of Microsoft Corporation in the United States and/or other countries.
 All other trademarks are the property of their respective owners.

© SKF Group 2011
 The contents of this publication are the copyright of the publisher and may not be reproduced (even extracts) unless prior written permission is granted. Every care has been taken to ensure the accuracy of the information contained in this publication but no liability can be accepted for any loss or damage whether direct, indirect or consequential arising out of the use of the information contained herein. SKF reserves the right to alter any part of this publication without prior notice.

