

Tagging of Measurement Points in SKF @ptitude Observer

Introduction

In SKF @ptitude Observer, it is possible to “tag” measurement points or machines with specific customized tags. Tagged measurement points and machines will be marked with a tag after the name of the node. For example, two measurement points have been tagged in **fig. 1**. The data tag will work as a graphical identifier, showing that these measurement points need, for example, some attention or action.

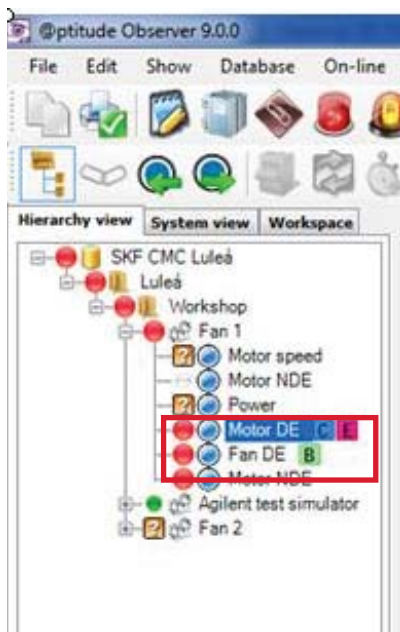


Fig. 1. Data tags in the hierarchy tree.

The description of the tags are defined in the Tag library in **fig. 2**. Each tag in the library can be given a certain description, for example

- "Off for maintenance"
- "Critical"
- "Discuss in the weekly meeting", etc.

When configuring a tag, you can also select a color and a letter ranging from A to Z of the tag. Once a tag has been configured in the library, the tag can be used to tag measurement points or machines.

Data tagging groups can also be created, allowing the user to filter the measurements and visualize them in a specific plot according to a certain tag assigned to the point (refer to application note **CM3168**, *Set up a Data Tagging Group*).

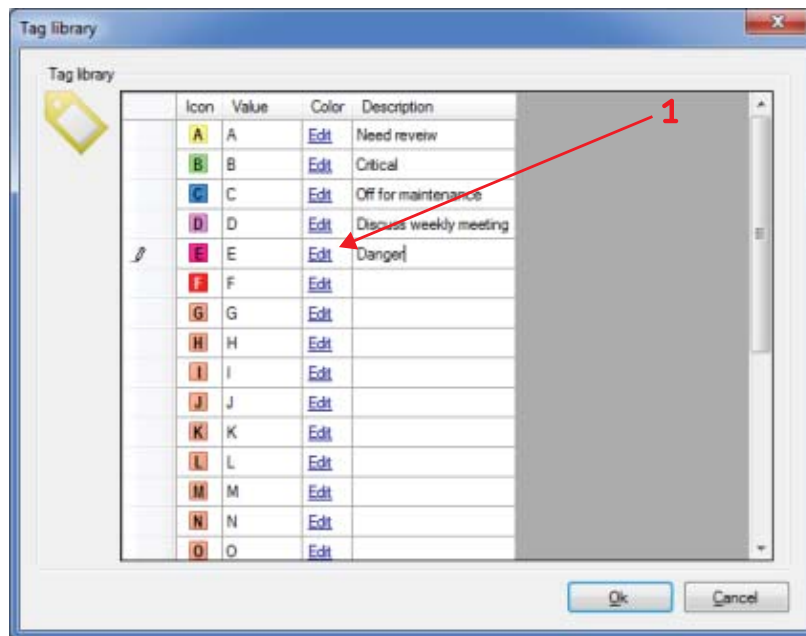


Fig. 2. Data tag library.

Procedure to add a tag to a measurement point

- 1 Right-click on the **Machine** or the **Measurement** point and select "Tag" in the drop down menu (→ fig. 3).
- 2 Select a user-predefined tag in the drop down menu in (→ fig. 4).
- 3 The tag will then show up on the selected point in the hierarchy.
- 4 A new tag can also be added directly from the measurement point window by clicking on the tag (→ fig. 5).
- 5 Then select a tag(s) from the library and press **OK** (→ fig. 6)
- 6 Fig. 7 shows the added tag to the measurement point.

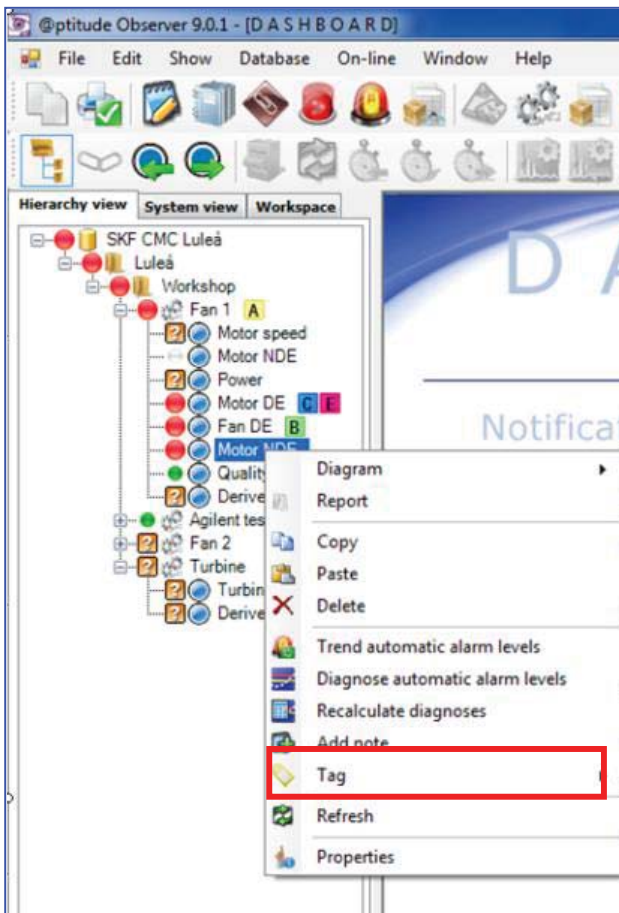


Fig. 3. Add a tag to a machine or a measurement point.

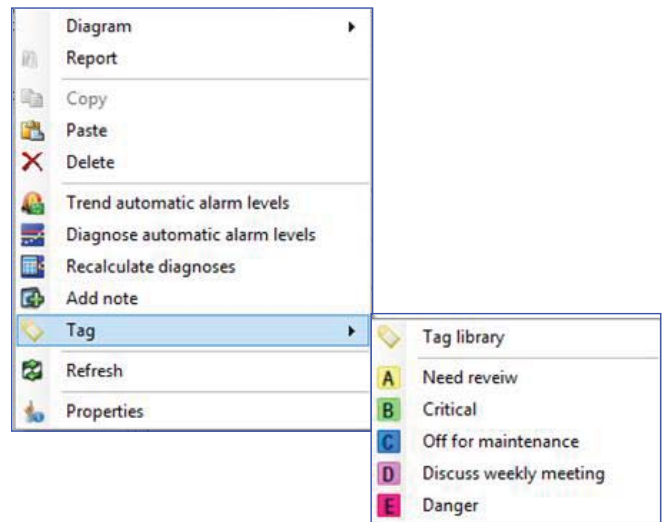


Fig. 4. Add a tag to a machine or a measurement.

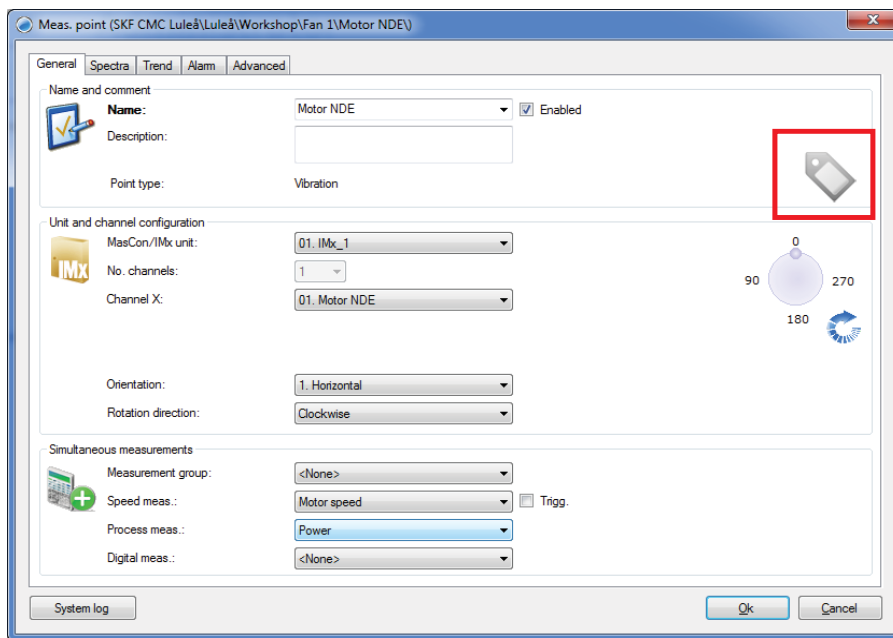


Fig. 5. Add a tag from the measurement point window.

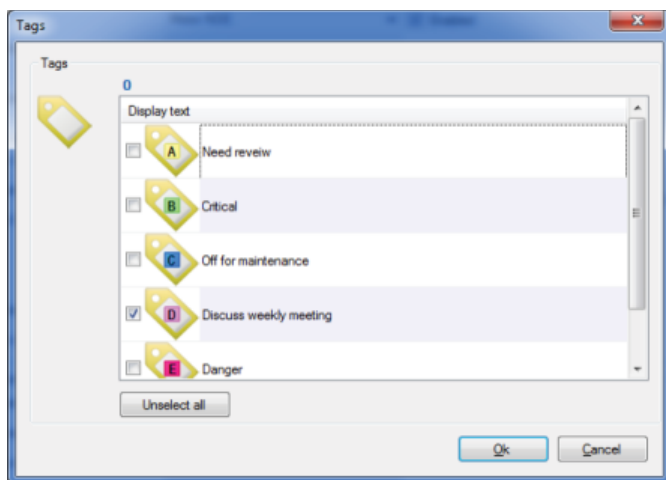


Fig. 6. Select your tag from the tag library.

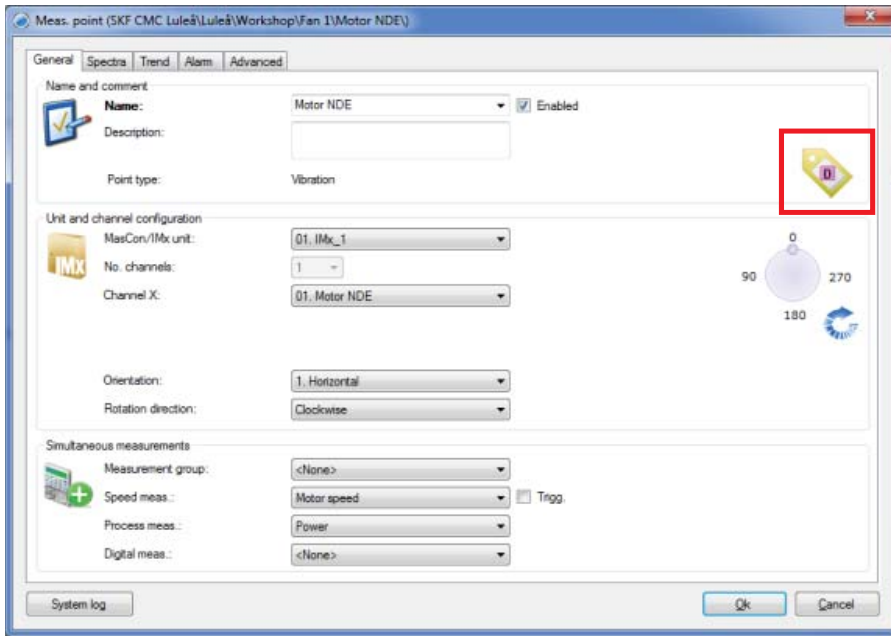


Fig. 7. The new tag is now visible in the measurement point window.

Procedure to create a new tag in the tag library

New tags are created in the tag library. A description and a color of the tag can be configured by the user (→ fig. 8). By clicking on the **Edit** button, you are able to select a color for the tag; the description can be edited directly in the description box (→ fig. 9).

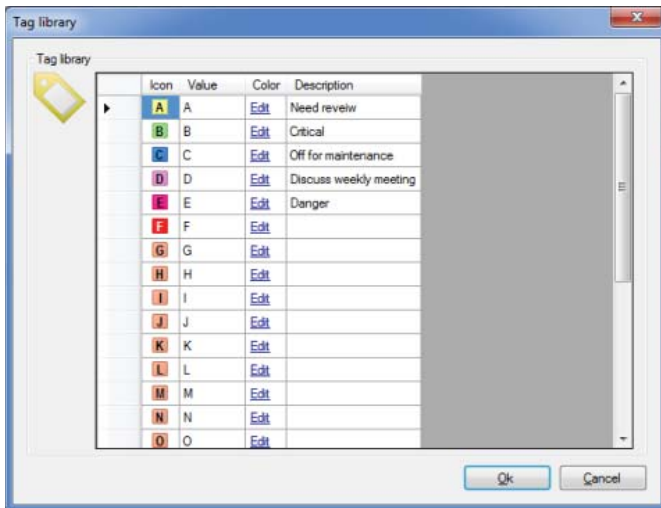


Fig. 8. Tag library.

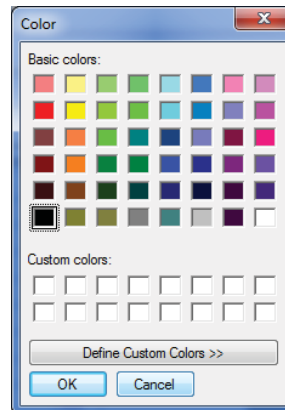


Fig. 9. Color selection.

Please contact:

SKF Condition Monitoring Center – Luleå

Aurorum 30 • SE-977 75 Luleå • Sweden

Tel: +46 (0)31 337 1000 • Fax: +46 (0)920 134 40

Web: www.skf.com

© SKF and @PTITUDE are registered trademarks of the SKF Group.

All other trademarks are the property of their respective owners.

© SKF Group 2013

The contents of this publication are the copyright of the publisher and may not be reproduced (even extracts) unless prior written permission is granted. Every care has been taken to ensure the accuracy of the information contained in this publication but no liability can be accepted for any loss or damage whether direct, indirect or consequential arising out of the use of the information contained herein.

PUB CM3174 EN • May 2013

