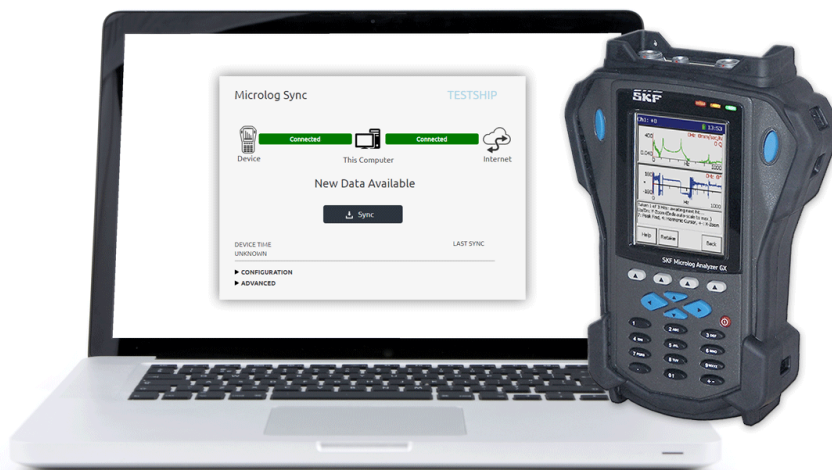


SKF Microlog Sync



Installation Guide

P/N Part Number **15V-090-00078-100** Revision Letter **A**

Copyright © 2018 by SKF Group

Notice of Confidentiality
All rights reserved.

SKF Sverige AB
Hornsgatan 1, 415 50 Göteborg, Sweden
Telephone: +46 (0) 31 337 10 00, Fax: +46 (0) 337 28 32

® SKF is a registered trademark of the SKF Group.

All other trademarks are the property of their respective owners.

© SKF 2018

The contents of this publication are the copyright of the publisher and may not be reproduced (even extracts) unless prior written permission is granted. Every care has been taken to ensure the accuracy of the information contained in this publication but no liability can be accepted for any loss or damage whether direct, indirect or consequential arising out of the use of the information contained herein.

Patents: US 4,768,380 • US 5,633,811 • US 5,679,900 • US 5,845,230 • US 5,852,351 • US 5,854,553 • US 5,854,994 • US 5,870,699 • US 5,907,491 • US 5,992,237 • US 6,006,164 • US 6,124,692 • US 6,138,078 • US 6,199,422 • US 6,202,491 • US 6,275,781 • US 6,301,514 • US 6,437,692 • US 6,489,884 • US 6,513,386 • US 6,633,822 • US 6,789,025 • US 6,792,360 • US 7,103,511 • US 7,697,492 • WO/2003/048714

1 General product information

General information such as product user manuals and catalogues are published on the [Condition Monitoring Products](#) site on SKF.com. General product information can also be downloaded from the self-service web portal at [SKF.com/cm/TSG](#).

2 Product support contact information

Technical Support – SKF's Technical Support Group can be reached during normal business hours via phone, e-mail, and live chat. Always check the [self-service web portal](#) before contacting your nearest Technical Support Group (TSG) to see if the answer is already published. You may search the vast knowledgebase within the self-service web portal for answers to commonly-asked questions (FAQ), how-to articles, technical specs, installation and user manuals, best practices and more.

Open a support ticket online now using our [support request](#) tool.

Customers in Europe, Middle East, and Africa:

- Phone: +46 31 337 6500
- E-Mail: TSG-EMEA@skf.com
- Chat: www.skf.com/cm/tsg

Customers in the Americas, Asia, and all other locations:

- Phone: 1-858-496-3627 or toll-free (USA) 1-800-523-7514
- E-Mail: TSG-Americas@skf.com
- Chat: www.skf.com/cm/tsg

Table of contents

1	SKF Microlog Sync installation guide	7
1.1	Software installation.....	7
1.2	Upgrade to a later version	13
2	Glossary.....	15
3	References.....	16

1 SKF Microlog Sync installation guide

This guide is a short description how to install SKF Microlog Sync. SKF Microlog Sync enables the SKF Microlog Analyzer to synchronise data with SKF Enlight Centre.

1.1 Software installation

For information about software version or hardware requirements see **Section 2 Product support contact information**.

- 1 Locate the installation file and double click on the file to initialise the installation process.



Figure 1 – Installation file

- 2 After the installation process has been initialised, a Welcome screen appears. Click **Install**.

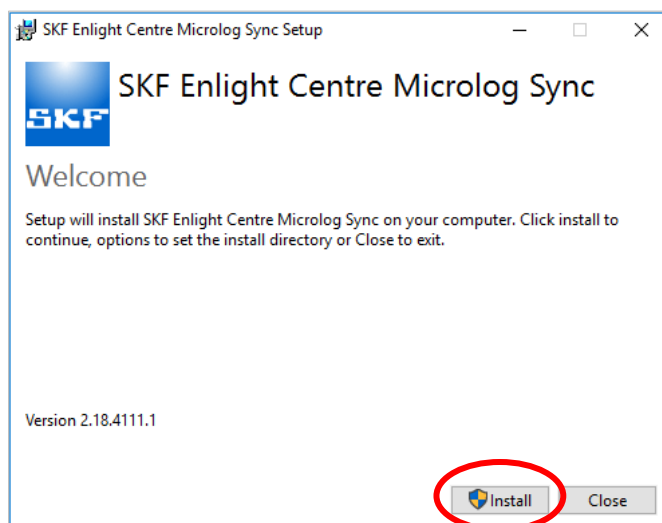


Figure 2 – SKF Microlog Sync setup

- 3 A pop-up window is displayed: 'Do you want to allow the following program to make changes to this computer?' Click **Yes**.

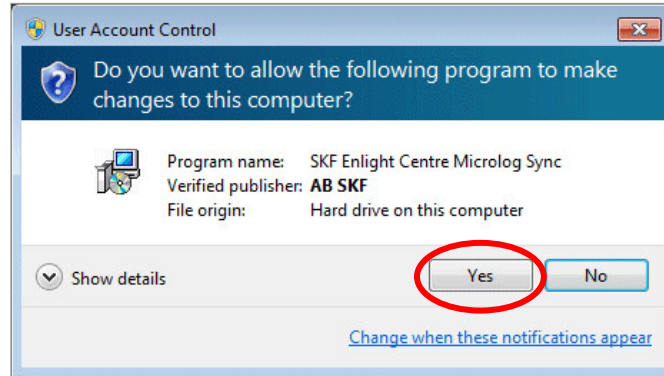


Figure 3 – Pop-up window

- 4 A progress bar for the Setup Progress is displayed. At the same time the Setup Wizard window is displayed. Click **Next** to continue.

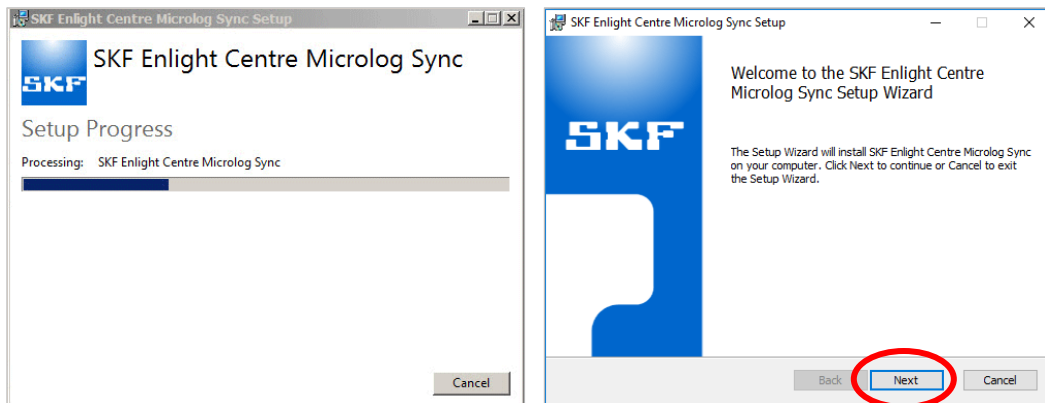


Figure 4 – Setup progress and setup wizard

Software installation

- The End-User License Agreement window is displayed. Carefully read the license agreement. If you do not agree with the terms of the license agreement, click **Cancel** to abort the installation. If you agree with the terms, select *'I accept the terms in the License Agreement'* and click **Next** to continue.



Figure 5 – End-User License Agreement

- The Network Settings window is displayed. Enter valid parameters provided by SKF and click **Next** to continue.

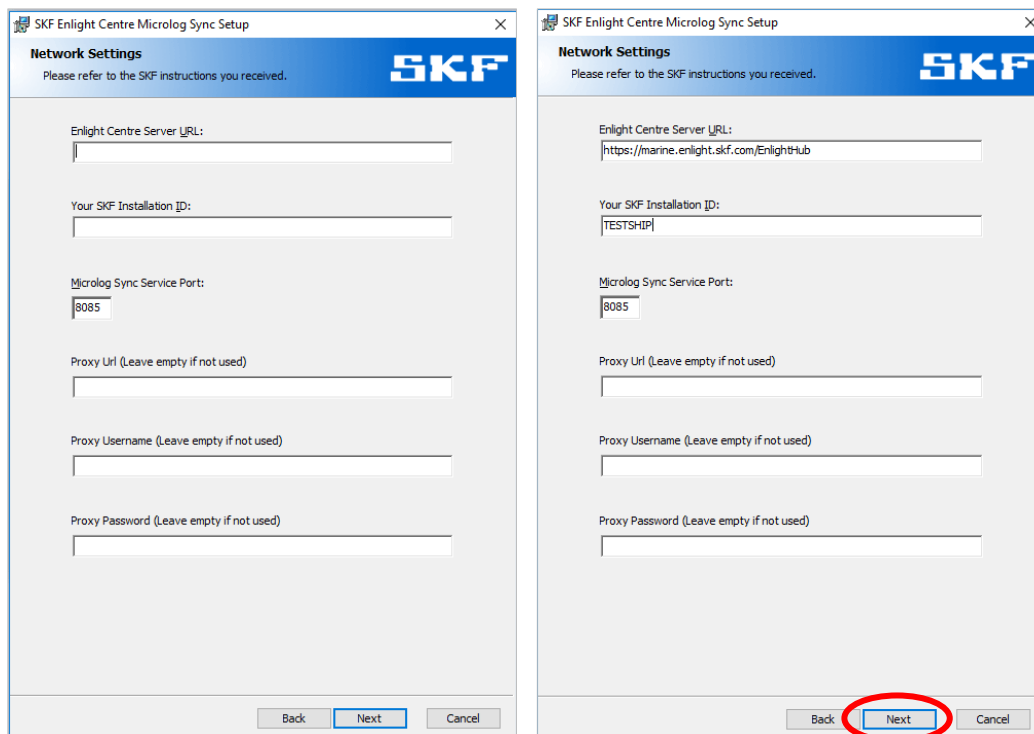


Figure 6 – Network Settings window – Example of settings

- 7 Click **Install** to begin the installation. Click **Back** to review or change any of your installation settings. Click **Cancel** to exit the wizard.

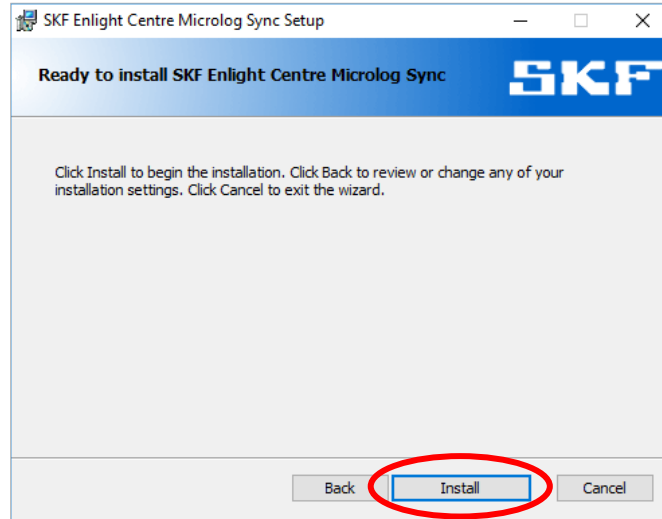


Figure 7 – Ready to install

- 8 The Setup Progress window and the Setup Wizard window are displayed again.

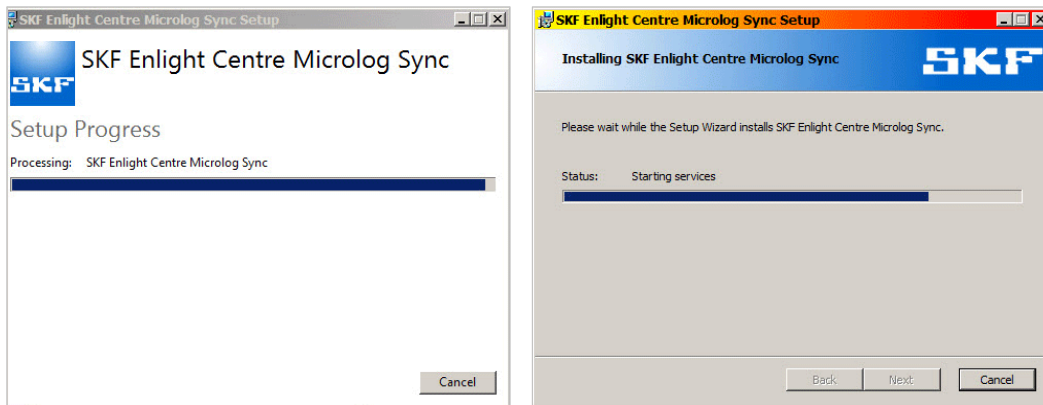


Figure 8 – Setup progress and setup wizard

Software installation

- 9 Click **Close** when the installation process is completed.

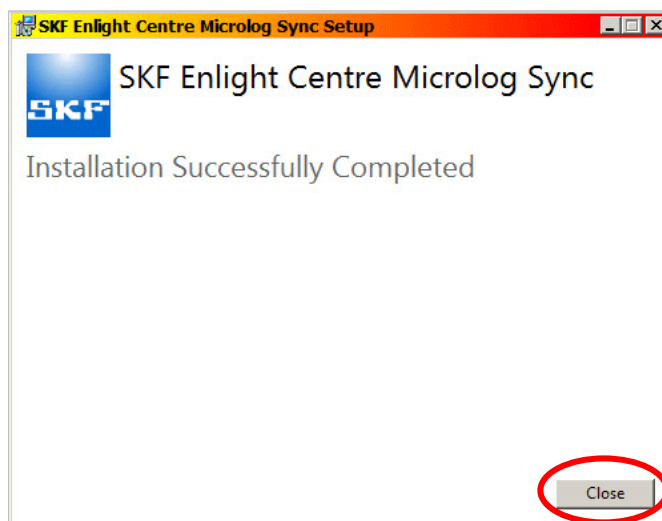


Figure 9 – Installation Successfully Completed

- 10 Verify the installation under **Services**:
 - A. Go to the **Start** menu, right-click on **Computer** and select **Manage**.
 - B. Double-click on **Services and Applications** and then **Services**.
 - C. Find **SKF Microlog Sync** in the list and verify that the status **Started/Running** is displayed.

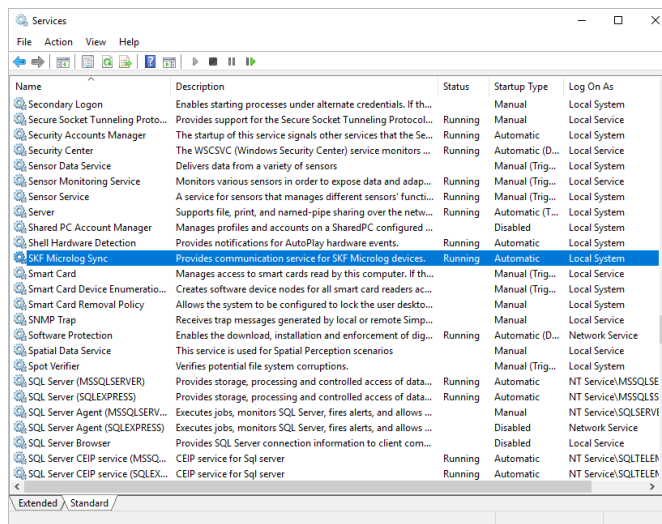


Figure 10 – Verify the installation under Services

11 The SKF Microlog Sync icon should now be visible on the computer desktop.



Figure 11 – SKF Microlog Sync icon

12 When double-clicking the SKF Microlog Sync icon, the page <http://localhost:8085/> opens in the default web browser. This is the parameter entered in Network Settings under the Microlog Sync Service Port, see **Figure 6**.

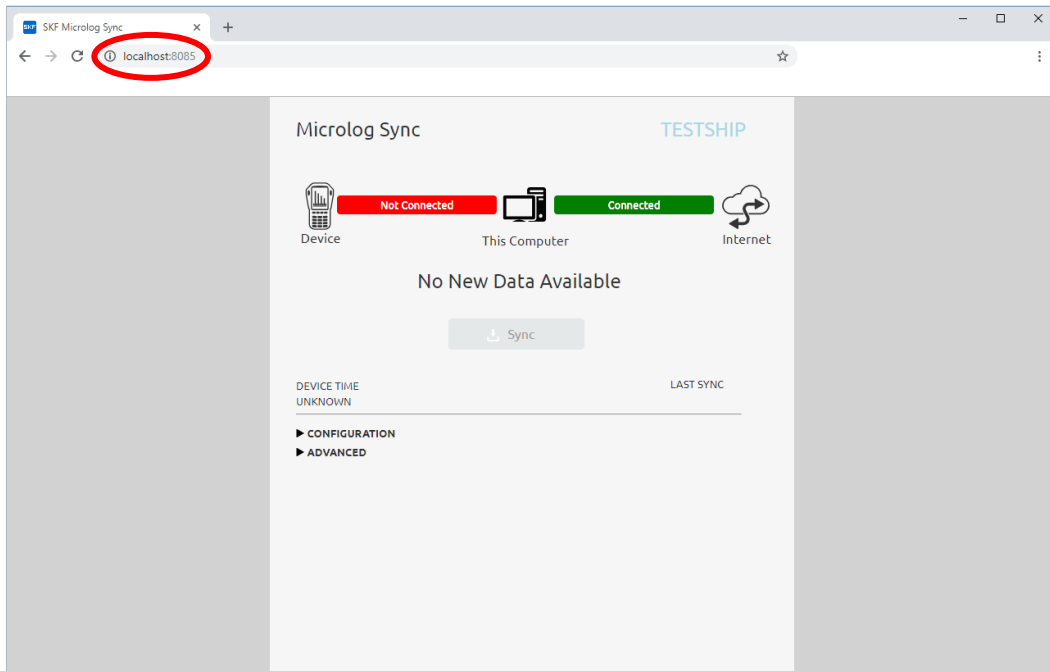


Figure 12 – Starting SKF Microlog Sync

Upgrade to a later version

1.2 Upgrade to a later version

- 13 Launch the installer. The installer will detect if there is an existing installation of SKF Microlog Sync.

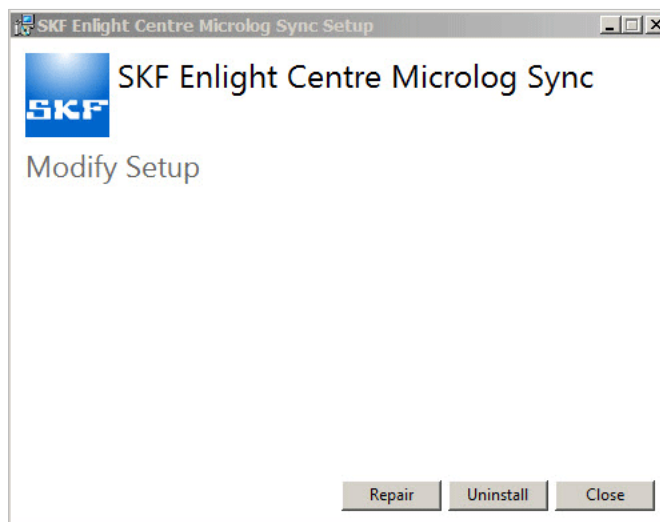


Figure 13 – SKF Microlog Sync setup

- 14 If a previous version of Microlog Sync is already installed and an upgrade is to be installed, first stop the service under **Services**:
 - A. Go to the **Start** menu, right-click on **Computer** and select **Manage**.
 - B. Double-click on **Services and Applications** and then **Services**.
 - C. Find **SKF Microlog Sync** in the list, highlight it, right-click and press **Stop**.

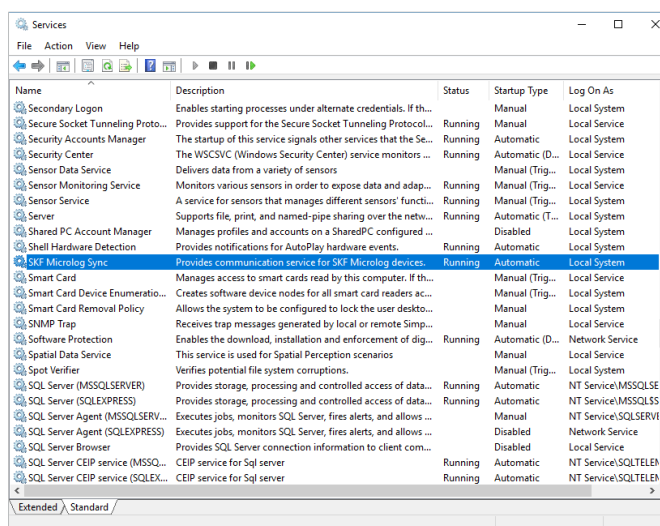


Figure 14 – Stop the service

- 15 The Microlog Sync files are located at: 'C:\Program Files (x86)\SKF\SKF Enlight Centre Microlog Sync'. There should be at least 70 items.

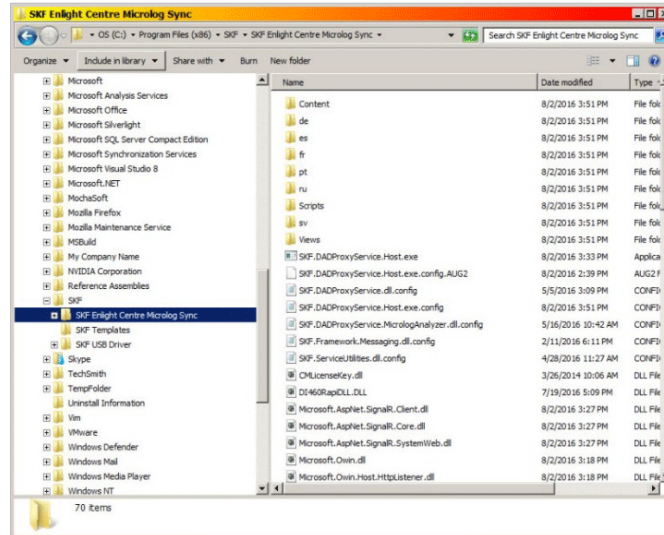


Figure 15 – Microlog Sync files location

- 16 The network settings parameters, see **Step 6**, can be changed in the following file: 'SKF.DADProxyServiceHost.exe.config'.

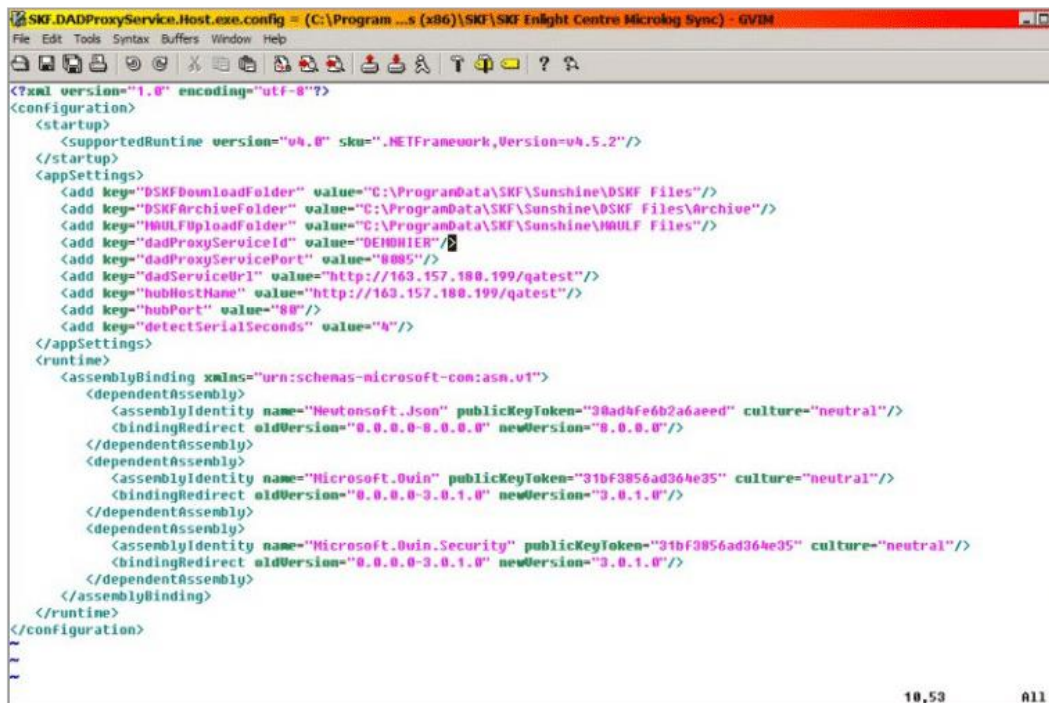


Figure 16 – Change the network settings parameters

2 Glossary

SKF Enlight Centre

SKF Enlight Centre is a web based software that is implemented to facilitate collection and analysis of machine data.

SKF Microlog Analyzer

SKF Microlog Analyzer is a data collecting device used for collecting machine data.

SKF Microlog Sync

SKF Microlog Sync is a software used for synchronising routes and collected data with the SKF Microlog Analyzer and SKF Enlight Centre.

3 References

1. SKF Enlight Centre User Manual,
Part No. 15V-090-00076-100 EN, Revision A
2. SKF Microlog[®] AX Series Data Collector/Analyzer User Manual,
Part No. 32298600-EN, Revision E
3. SKF Microlog[®] GX Series Data Collector/Analyzer User Manual,
Part No. 32298500-EN, Revision E